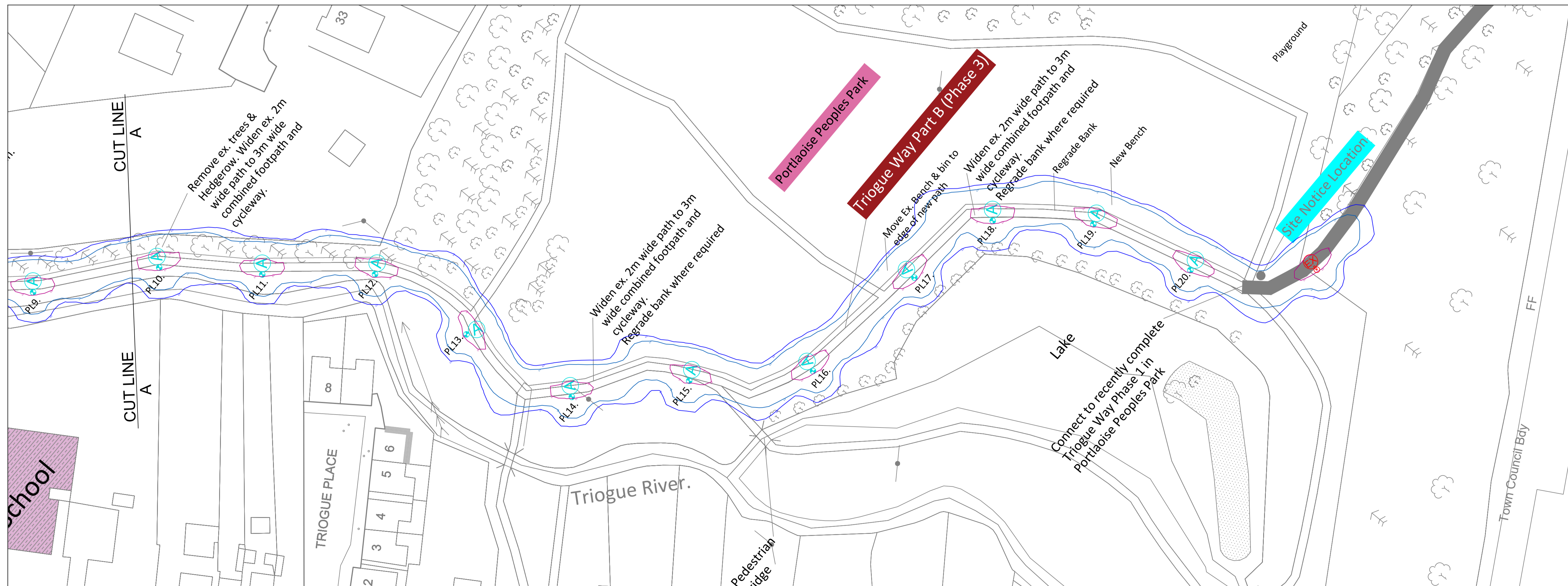


Qt	Ref	TYPE
20	ⓐ	POSITION OF 4M RAISE AND LOWER LIGHTING COLUMN TO LAOIS COUNTY COUNCIL SPECIFICATION WITH 2.7K POST TOP MOUNTED HIGHWAY DIAMOND 4 LED 400mA M1 LENS MOUNTED AT 0 DEGREES TILT UNLESS OTHERWISE STATED. LANTERNS TO BE CONTROLLED IN LINE WITH LAOIS COUNTY COUNCIL SPECIFICATION.
2	ⓑ	POSITION OF EXISTING LAOISE COUNTY COUNCIL LIGHTING COLUMN TO BE RELOCATED TO REAR OF FOOTWAY/CYCLEWAY. LOCATION TO BE CONFIRMED ON SITE.
	ⓓ	TRIOGUE BLUEWAY PHASE 1 LIGHTING COLUMN TO REMAIN.

THE LIGHTING DESIGN HAS BEEN PREPARED IN ACCORDANCE WITH BS5489-1:2020 TO PROVIDE INDICATIVE COLUMN POSITIONS. FOR TRANSPARENCY AND THE AVOIDANCE OF DOUBT DRAWING no. ASD-SL-IR-2023-24-002-01 IS NOT TO BE USED AS A CONSTRUCTION DRAWING. A SITE SURVEY HAS NOT BEEN CARRIED OUT IN ACCORDANCE WITH CDM 2015 AND HEA GUIDELINES. THEREFORE THE RESPONSIBILITIES OF ELIMINATING AND REDUCING RISK WILL NEED TO MITIGATED BY A COMPETENT PRINCIPLE DESIGNER.



REV	DESCRIPTION	DATE	BY

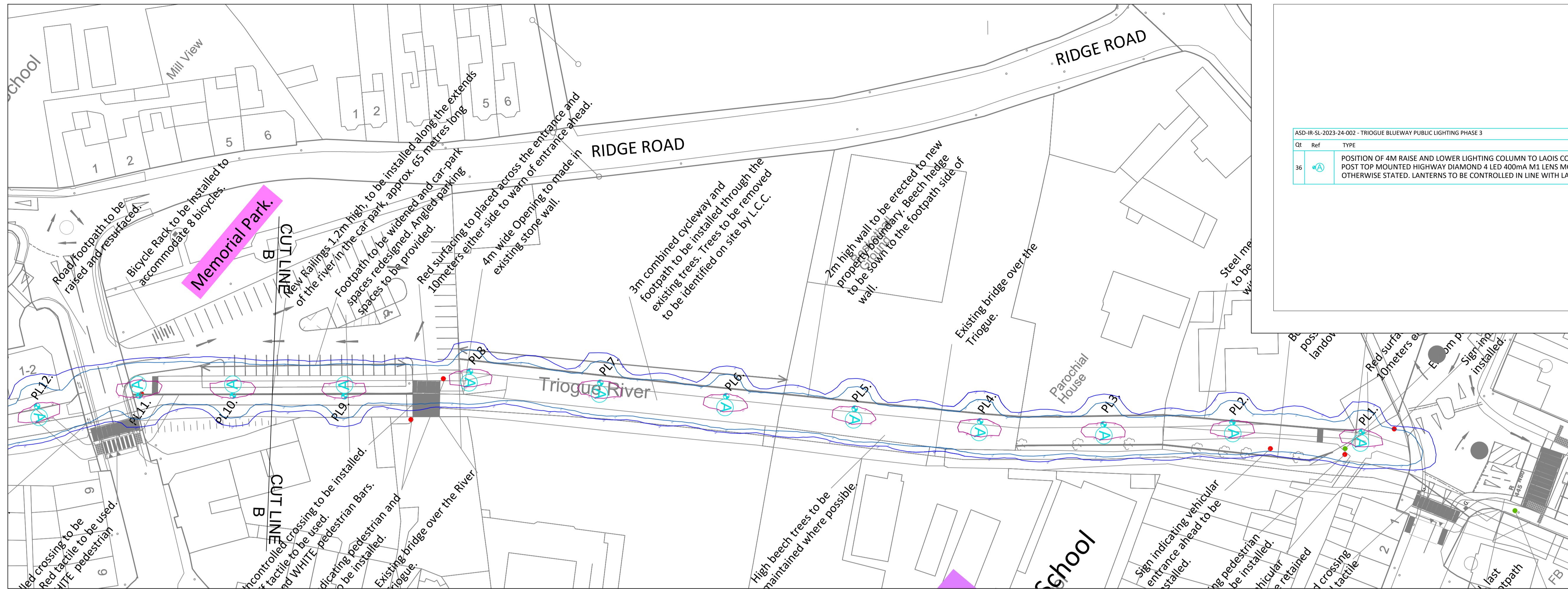
ASD LIGHTING PLC
MANGHAM ROAD
BARBOT HALL INDUSTRIAL ESTATE
ROTHERHAM
S61 4RJ

TITLE
STREET LIGHTING LAYOUT
TRIOGUE BLUEWAY
PUBLIC LIGHTING
SHEET 1 OF 3
PHASE 2

CUSTOMER
PORTLAOISE

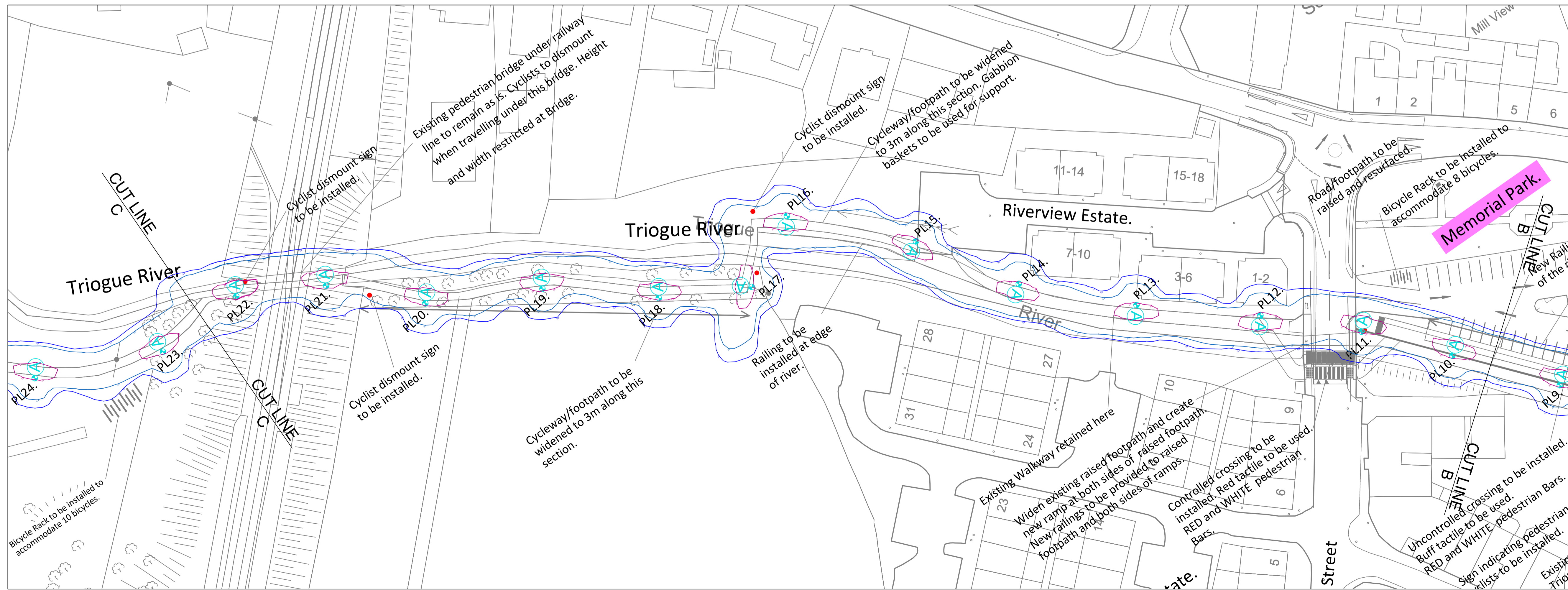
SCALE	DATE	10/08/23
1:500	DRAWN	BJS
	CHECKED	MDE

PAPER SIZE	A1	APPROVED	NF
DRAWING NUMBER	ASD-SL-IR-2023-24-002-01	REVISION	R0



Qt	Ref	TYPE
36		POSITION OF 4M RAISE AND LOWER LIGHTING COLUMN TO LAOIS COUNTY COUNCIL SPECIFICATION WITH 2.7K POST TOP MOUNTED HIGHWAY DIAMOND 4 LED 400mA M1 LENS MOUNTED AT 0 DEGREES TILT UNLESS OTHERWISE STATED. LANTERNS TO BE CONTROLLED IN LINE WITH LAOIS COUNTY COUNCIL SPECIFICATION.

THE LIGHTING DESIGN HAS BEEN PREPARED IN ACCORDANCE WITH BS5489-1:2020 TO PROVIDE INDICATIVE COLUMN POSITIONS. FOR TRANSPARENCY AND THE AVOIDANCE OF DOUBT DRAWING NO. ASD-SL-IR-2023-24-002-02 IS NOT TO BE USED AS A CONSTRUCTION DRAWING. A SITE SURVEY HAS NOT BEEN CARRIED OUT IN ACCORDANCE WITH CDM 2015 AND HEA GUIDELINES. THEREFORE THE RESPONSIBILITIES OF ELIMINATING AND REDUCING RISK WILL NEED TO BE MITIGATED BY A COMPETENT PRINCIPLE DESIGNER.



REV	DESCRIPTION	DATE	BY

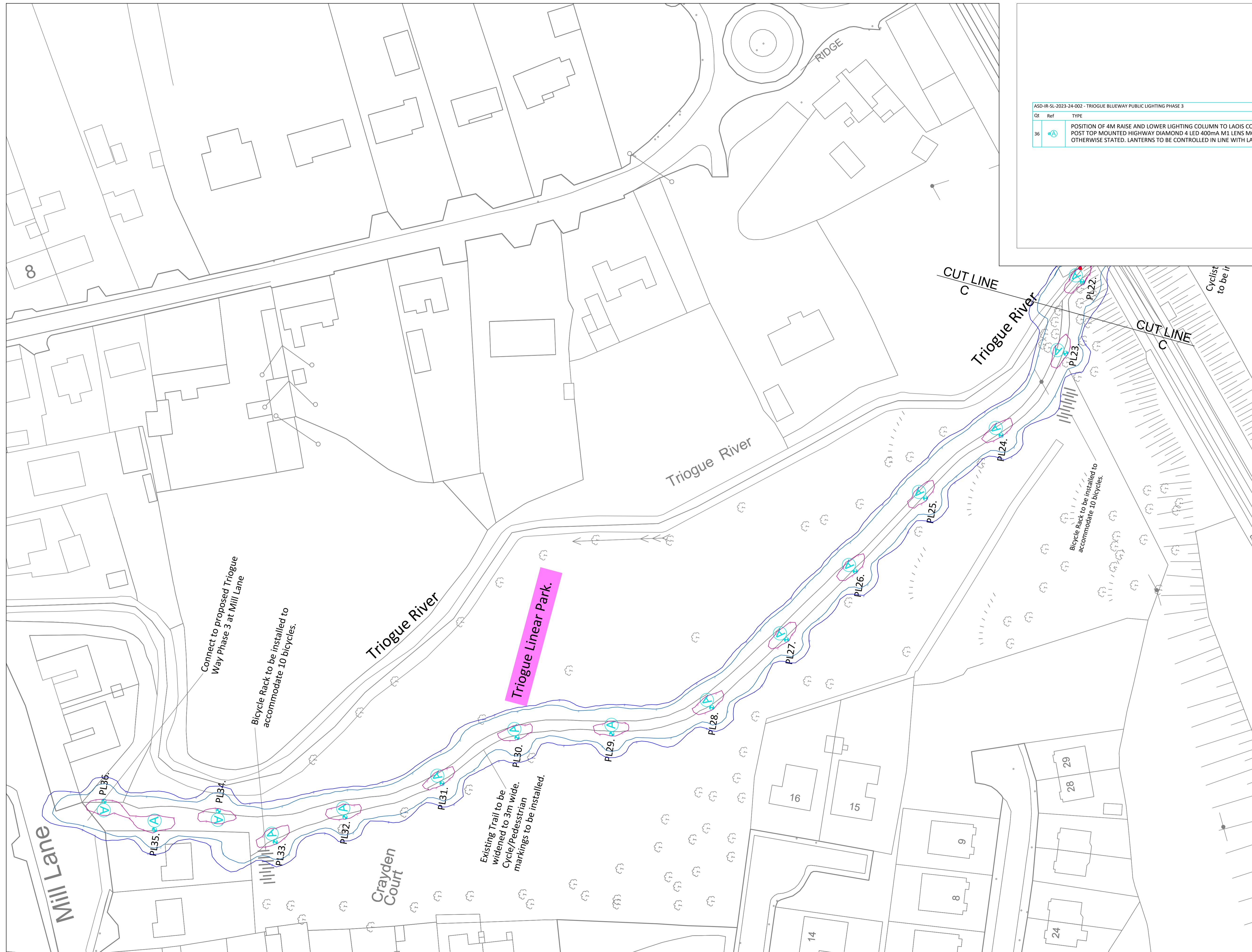
ASD LIGHTING PLC
MANGHAM ROAD
BARBOT HALL INDUSTRIAL ESTATE
ROTHERHAM
S61 4RJ

TITLE
STREET LIGHTING LAYOUT
TRIOGUE BLUEWAY
PUBLIC LIGHTING
SHEET 2 OF 3
PHASE 3

CUSTOMER
PORTLAOISE

SCALE	DATE	10/08/23
1:500	DRAWN	BJS
	CHECKED	MDE

PAPER SIZE	A1	APPROVED	NF
DRAWING NUMBER	ASD-SL-IR-2023-24-002-02	REVISION	R0



Qt	Ref	TYPE
36		POSITION OF 4M RAISE AND LOWER LIGHTING COLUMN TO LAOIS COUNTY COUNCIL SPECIFICATION WITH 2.7K POST TOP MOUNTED HIGHWAY DIAMOND 4 LED 400mA M1 LENS MOUNTED AT 0 DEGREES TILT UNLESS OTHERWISE STATED. LANTERNS TO BE CONTROLLED IN LINE WITH LAOIS COUNTY COUNCIL SPECIFICATION.

THE LIGHTING DESIGN HAS BEEN PREPARED IN ACCORDANCE WITH BS5489-1:2020 TO PROVIDE INDICATIVE COLUMN POSITIONS. FOR TRANSPARENCY AND THE AVOIDANCE OF DOUBT DRAWING no. ASD-SL-IR-2023-24-002-03 IS NOT TO BE USED AS A CONSTRUCTION DRAWING. A SITE SURVEY HAS NOT BEEN CARRIED OUT IN ACCORDANCE WITH CDM 2015 AND HEA GUIDELINES. THEREFORE THE RESPONSIBILITIES OF ELIMINATING AND REDUCING RISK WILL NEED TO BE MITIGATED BY A COMPETENT PRINCIPLE DESIGNER.

REV	DESCRIPTION	DATE	BY



ASD LIGHTING PLC
 MANGHAM ROAD
 BARBOT HALL INDUSTRIAL ESTATE
 ROTHERHAM
 S61 4RJ

TITLE
 STREET LIGHTING LAYOUT
 TRIOGUE BLUEWAY
 PUBLIC LIGHTING
 SHEET 3 OF 3
 PHASE 3

CUSTOMER
 PORTLOAISE

SCALE	DATE
1:500	10/08/23

PAPER SIZE	APPROVED
A1	NF

DRAWING NUMBER	REVISION
ASD-SL-IR-2023-24-002-03	R0

DATE: 7 August 2023
DESIGNER: Brian Smith
PROJECT No: ASD-IR-SL-2023-24-002 LR R0
PROJECT NAME: Triogue Blueway Phase 2 and 3



BS5489_2020
Lighting Class P6
Eav = 2.00 - 3.00 Lux
Emin = 040 Lux

Outdoor Lighting Report

PREPARED BY: ASD Lighting PLC
Mangham Road
Barbot Hall Industrial Estate
Rotherham
S61 4RJ
e-mail: bsmith@asdlighting.com

Layout Report

General Data

Dimensions in Metres Angles in Degrees

Calculation Grids

ID	Grid Name	X	Y	X' Length	Y' Length	X' Spacing	Y' Spacing
1	Grid 1	647514.22	697915.34	175.00	220.00	1.50	1.50
2	Grid 2	647351.00	698093.00	175.00	220.00	1.50	1.50
3	Grid 3	647214.00	698298.91	175.00	220.00	1.50	1.50
4	Grid 4	647107.78	698506.93	175.00	220.00	1.50	1.50
5	Grid 5	646954.00	698661.00	175.00	220.00	1.50	1.50
6	Grid 6	646725.00	698797.41	250.00	264.00	1.50	1.50

Luminaires

Luminaire A Data

Supplier	
Type	HWD2-#27K04 400-M1-CLO Gen 5
Lamp(s)	LED
LampFlux(klm)/Colour	0.54 2700/72
File Name	HWD2-#27K04 400-M1-CLO (7W).ldt
Maintenance Factor	0.83
Imax70,80,90(cd/klm)	717.5, 259.5, 1.5
No. in Project	56

Luminaire S Data

Supplier	
Type	HWD2-#27K04 400-M1-CLO Gen 7
Lamp(s)	LED
LampFlux(klm)/Colour	0.56 2700/72
File Name	HWD2-#27K04 400-M1-CLO (7W).ldt
Maintenance Factor	0.83
Imax70,80,90(cd/klm)	717.5, 259.5, 1.5
No. in Project	1

Layout

ID	Type	X	Y	Height	Angle	Tilt	Cant	Out-reach	Target X	Target Y	Target Z
1	A	647643.75	697946.99	4.00	15.00	0.00	0.00	0.30			
2	S	647662.07	697925.37	4.00	78.00	0.00	0.00	0.30			
3	A	647637.65	697970.38	4.00	23.00	0.00	0.00	0.30			
4	A	647623.69	697988.18	4.00	42.00	0.00	0.00	0.30			
5	A	647602.62	697993.45	4.00	84.00	0.00	0.00	0.30			
6	A	647571.89	697997.31	4.00	73.00	0.00	0.00	0.30			
7	A	647552.39	698017.31	4.00	25.00	0.00	0.00	0.30			
8	A	647532.64	698035.17	4.00	44.00	0.00	0.00	0.30			
9	A	647528.21	698062.31	4.00	341.00	0.00	0.00	0.30			
10	A	647525.35	698086.72	4.00	27.00	0.00	0.00	0.30			
11	A	647509.01	698106.09	4.00	38.00	0.00	0.00	0.30			
12	A	647495.32	698124.81	4.00	48.00	0.00	0.00	0.30			
13	A	647472.88	698142.93	4.00	41.00	0.00	0.00	0.30			
14	A	647455.56	698165.80	4.00	32.00	0.00	0.00	0.30			
15	A	647439.25	698186.97	4.00	41.00	0.00	0.00	0.30			

Layout Continued

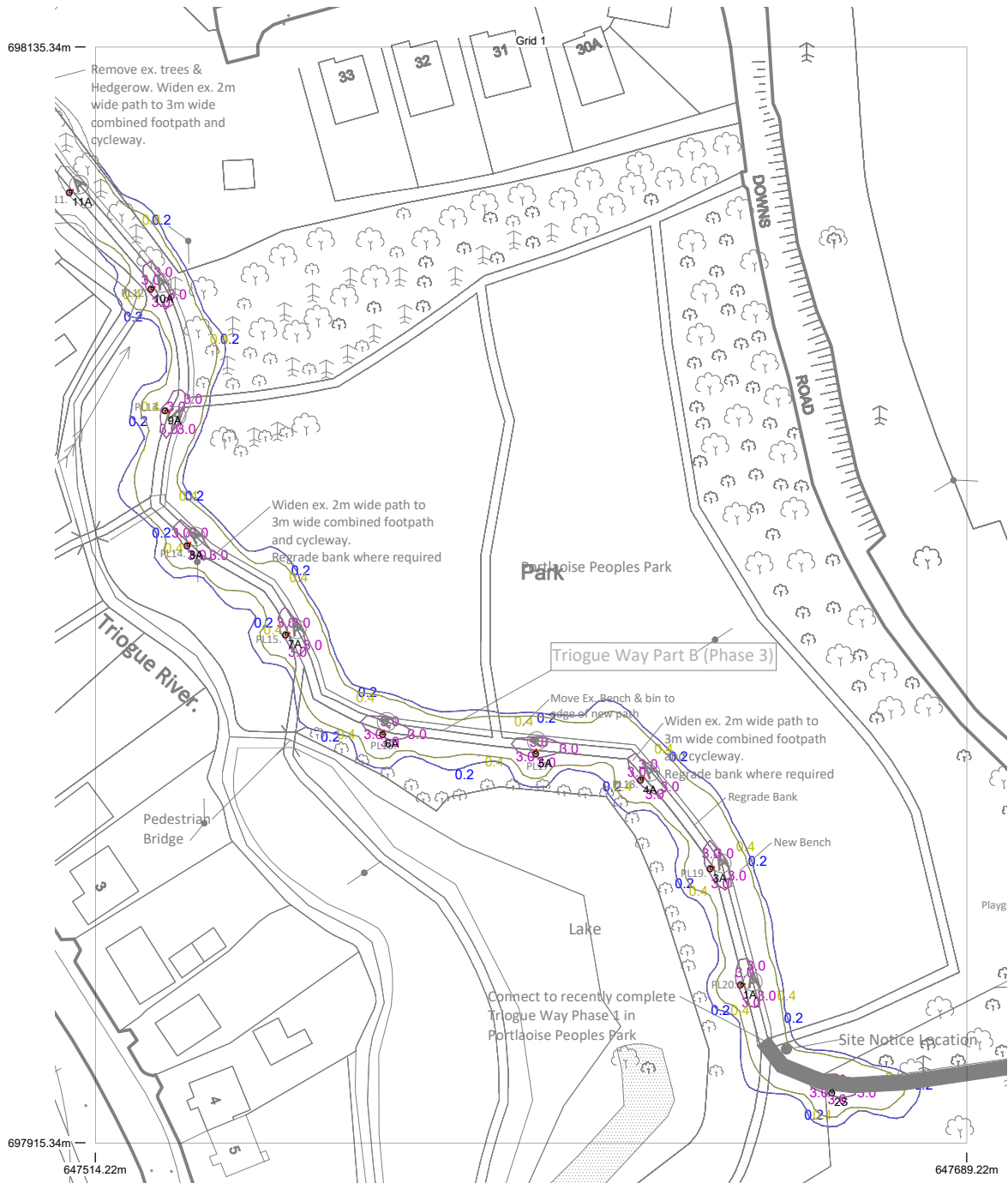
ID	Type	X	Y	Height	Angle	Tilt	Cant	Out-reach	Target X	Target Y	Target Z
16	A	647420.02	698208.19	4.00	35.00	0.00	0.00	0.30			
17	A	647387.23	698253.07	4.00	34.00	0.00	0.00	0.30			
18	A	647381.02	698273.67	4.00	203.00	0.00	0.00	0.30			
19	A	647370.40	698300.34	4.00	203.00	0.00	0.00	0.30			
20	A	647364.23	698322.82	4.00	184.00	0.00	0.00	0.30			
24	A	647327.62	698442.94	4.00	213.00	0.00	0.00	0.30			
25	A	647310.60	698466.58	4.00	221.00	0.00	0.00	0.30			
26	A	647291.67	698488.43	4.00	219.00	0.00	0.00	0.30			
27	A	647274.39	698510.07	4.00	214.00	0.00	0.00	0.30			
28	A	647258.48	698533.44	4.00	212.00	0.00	0.00	0.30			
29	A	647242.07	698557.31	4.00	214.00	0.00	0.00	0.30			
30	A	647226.24	698580.86	4.00	214.00	0.00	0.00	0.30			
31	A	647209.36	698604.91	4.00	222.00	0.00	0.00	0.30			
32	A	647187.00	698622.90	4.00	41.00	0.00	0.00	0.30			
33	A	647171.05	698642.15	4.00	40.00	0.00	0.00	0.30			
34	A	647157.46	698658.27	4.00	44.00	0.00	0.00	0.30			
35	A	647140.99	698674.27	4.00	235.00	0.00	0.00	0.30			
36	A	647119.56	698692.10	4.00	234.00	0.00	0.00	0.30			
37	A	647100.66	698711.15	4.00	223.00	0.00	0.00	0.30			
38	A	647087.23	698732.19	4.00	208.00	0.00	0.00	0.30			
39	A	647066.78	698753.47	4.00	232.00	0.00	0.00	0.30			
40	A	647051.20	698744.92	4.00	140.00	0.00	0.00	0.30			
41	A	647032.65	698754.86	4.00	52.00	0.00	0.00	0.30			
42	A	647012.47	698771.53	4.00	59.00	0.00	0.00	0.30			
43	A	646989.07	698783.90	4.00	48.00	0.00	0.00	0.30			
44	A	646973.12	698799.90	4.00	59.00	0.00	0.00	0.30			
45	A	646934.66	698808.78	4.00	84.00	0.00	0.00	0.30			
46	A	646907.70	698820.41	4.00	50.00	0.00	0.00	0.30			
47	A	646885.13	698836.35	4.00	61.00	0.00	0.00	0.30			
48	A	646860.20	698850.07	4.00	59.00	0.00	0.00	0.30			
49	A	646836.65	698863.78	4.00	58.00	0.00	0.00	0.30			
50	A	646812.77	698879.12	4.00	48.00	0.00	0.00	0.30			
51	A	646798.39	698904.36	4.00	18.00	0.00	0.00	0.30			
52	A	646790.46	698929.76	4.00	30.00	0.00	0.00	0.30			
53	A	646772.61	698946.79	4.00	46.00	0.00	0.00	0.30			
54	A	646756.42	698970.67	4.00	25.00	0.00	0.00	0.30			

Layout Continued

ID	Type	X	Y	Height	Angle	Tilt	Cant	Out-reach	Target X	Target Y	Target Z
55	A	646744.59	698987.79	4.00	42.00	0.00	0.00	0.30			
56	A	646748.93	699005.50	4.00	193.00	0.00	0.00	0.30			
57	A	646743.21	699037.22	4.00	193.00	0.00	0.00	0.30			
58	A	646739.16	699021.45	4.00	17.00	0.00	0.00	0.30			
59	A	646955.27	698809.54	4.00	65.00	0.00	0.00	0.30			
57	A	647403.54	698230.66	4.00	35.00	0.00	0.00	0.30			

Horizontal Illuminance (lux)

Grid 1



Results

Eav	2.36
Emin	0.59
Emax	10.51
Emin/Emax	0.06
Emin/Eav	0.25

Horizontal Illuminance (lux)

Grid 2

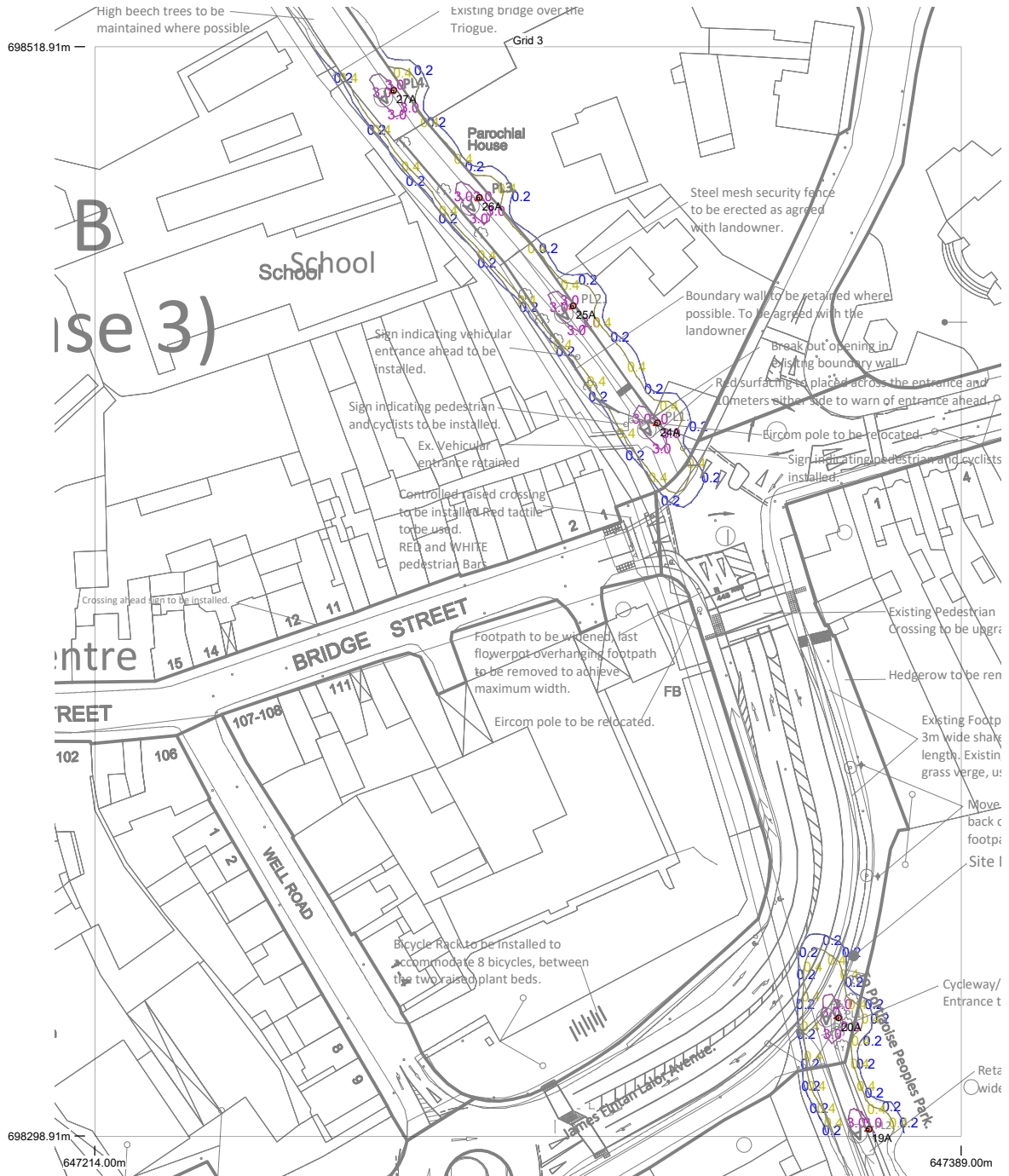


Results

Eav	2.53
Emin	0.64
Emax	10.69
Emin/Emax	0.06
Emin/Eav	0.25

Horizontal Illuminance (lux)

Grid 3

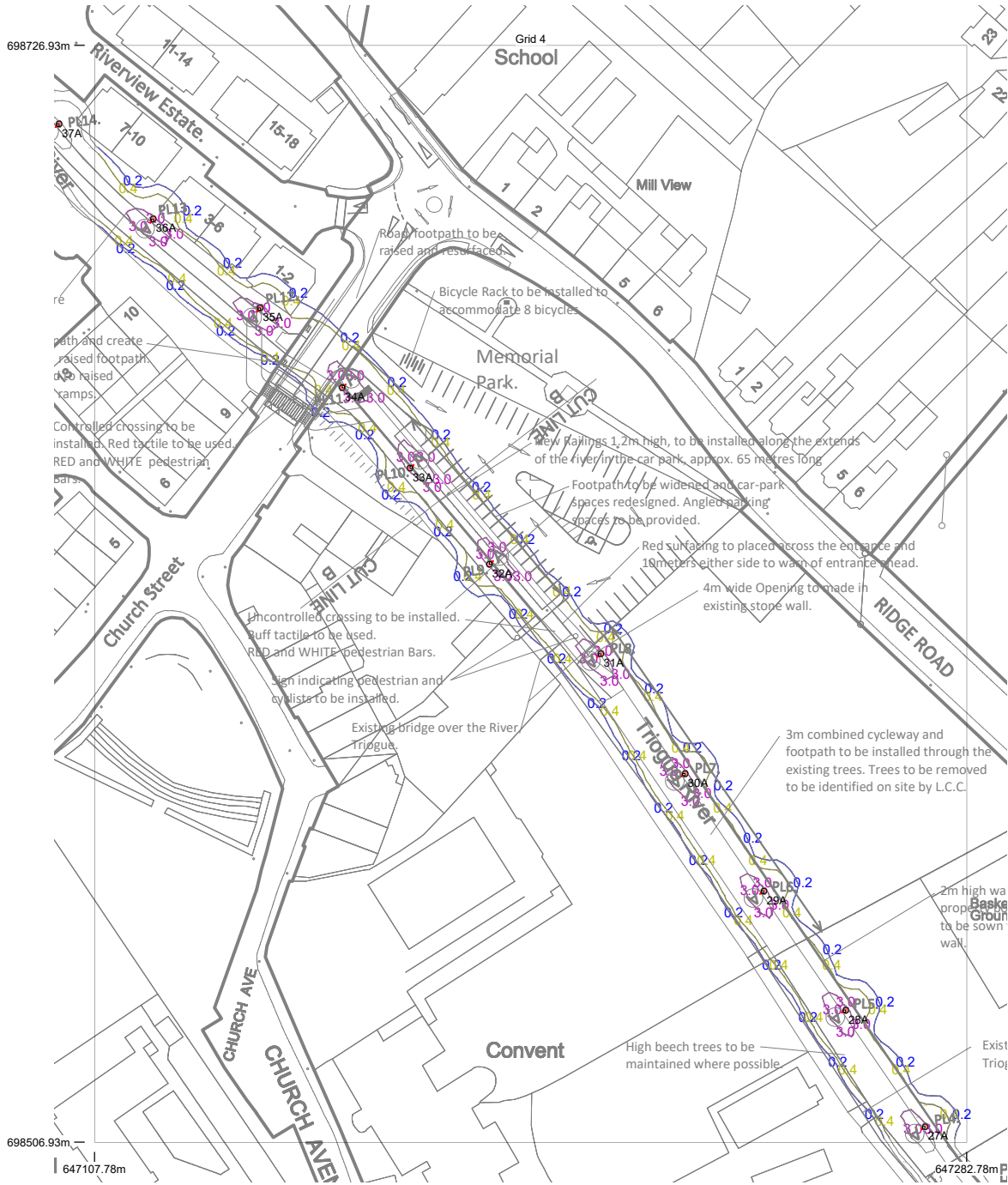


Results

Eav	2.54
Emin	0.63
Emax	10.02
Emin/Emax	0.06
Emin/Eav	0.25

Horizontal Illuminance (lux)

Grid 4

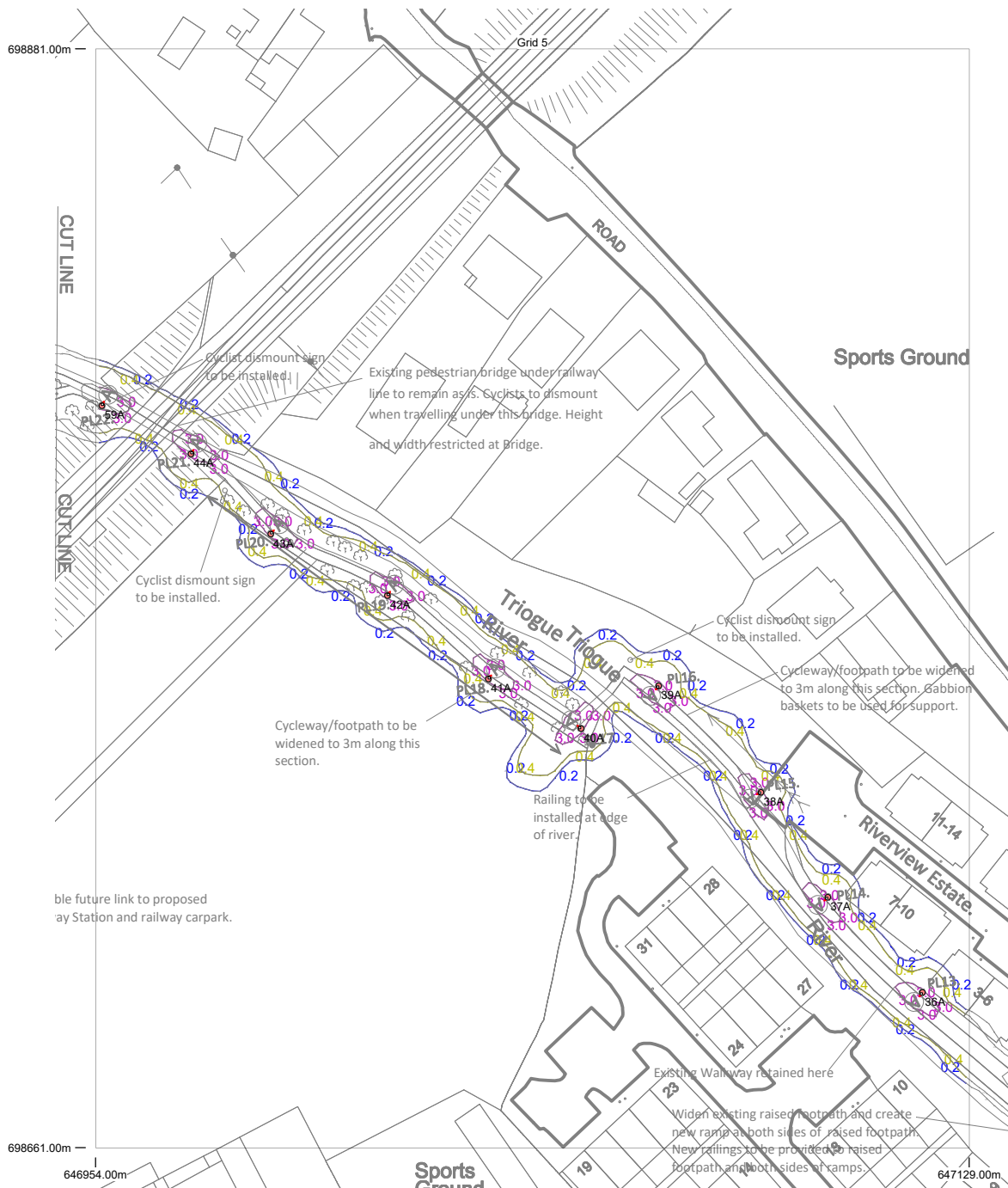


Results

Eav	2.57
Emin	0.63
Emax	10.27
Emin/Emax	0.06
Emin/Eav	0.25

Horizontal Illuminance (lux)

Grid 5



Results

Eav	2.69
Emin	0.66
Emax	10.79
Emin/Emax	0.06
Emin/Eav	0.25

Horizontal Illuminance (lux)

Grid 6



Results

Eav	2.75
Emin	0.67
Emax	10.77
Emin/Emax	0.06
Emin/Eav	0.25