

## Main Features



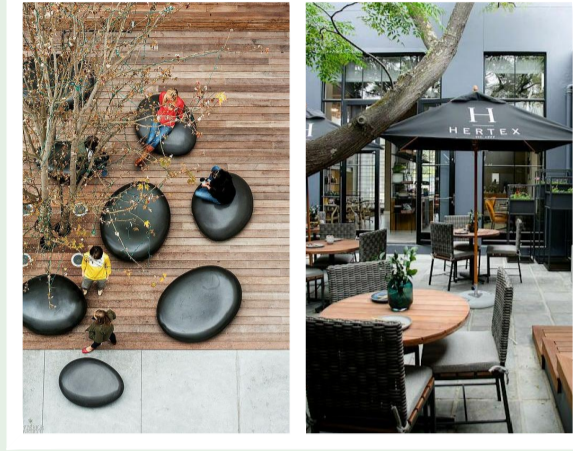
- 1 Enhanced Millennium Fountain**
- The Fountain is currently lost within the trees with no path access.
  - New self binding gravel path with defined edge linking from road to the existing commemorative plaque and around the fountain.
  - Tree canopies raised to improve views of the fountain.
  - 3 trees removed to open up the surrounding lawns and improve natural lighting.



- 6 Private Workspace Courtyard**
- Private enclosed space within the heart of the development which will offer outdoor work and meeting spaces.
  - Central Cor-ten steel raised tiered planter with integrated hardwood furniture with a variety of seating and desk options with integrated power supply.
  - A shade tolerant tree at the centre of the space extending towards the roof line acts as a focal feature, with understory planting of shade tolerant species.



- 2 Formal Lawned Gardens**
- Current impermeable hardstanding area removed as part of the SuDS approach and replaced with low maintenance lawn and clover mix.
  - Three trees removed to open up the space to reestablish views and strengthen symmetry of the landscape that faces the Courthouse.
  - Native spring bulbs in strips for spring colour.



- 9 Public Raised Terrace**
- Open to the public, the terrace interacts building uses with the street. It is slightly raised giving it separation from the road.
  - A flexible space, it offers spillout space for tables and chairs for outdoor dining, as well as exhibition space and gathering area.
  - A soft lightly structured native tree (eg. silver birch) at the corner of the terrace is set over sculptural informal seating.



- 3 Hardstanding and Access Point**
- Hardstanding for service vehicles associated with telecommunications structure, and other maintenance vehicles.
  - Reinforced grass surfacing to reduce the visual impact of it on the overall design whilst also allowing a defined pull in area away from footpaths.
  - Low maintenance and durable grass species.
  - Permeable surface as part of the SuDS philosophy



- 10 Cycle & Scooter Parking and Charging**
- Cycle parking located at key locations near building access points to encourage use of alternative transport.
  - Within the central courtyard, bicycles and scooters will be covered and have access to charging facilities.



- 4 Raised Civic Garden**
- A civic garden within the confines of the existing western planter of the Courthouse.
  - Existing railings are to be retained and refurbished with plinth stones to be repaired and re-laid to new levels where needed.
  - New wheelchair accessible opening to be created at the northern side.
  - Mixed perennial shrubs and herbaceous plants for all year interest.
  - Two new benches facing west.



- 11 Remodeled Existing Planter**
- Existing planters and steps at the southern side of the courtyard to be removed and building base refaced in natural stone.
  - New planter reinstated at lower level and extended and reshaped to new footpath alignment.
  - Mixed perennial pollinator planting with year interest including decorative seed heads.



- 5 Tiered Screen Planting**
- Deep planted border to screen the telecommunications structure.
  - Tiers of low growing mixed perennials to shrubs and trees.
  - Native species where possible. 100% native trees.
  - Corten edge used to define areas and help with maintenance.
  - Deep bark mulch surface finish



- 12 Bin Storage Corral**
- Lockable screened storage area for bins and other items.
  - Timber panel finish. With powder coated galvanised steel structure.
  - 2.4m height.
  - Space for 2-3 large bins



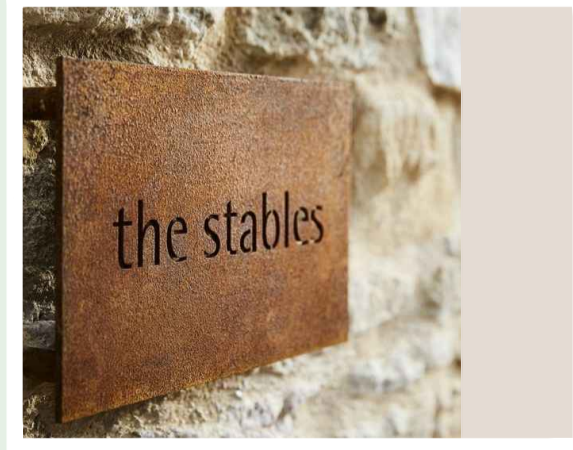
- 6 Parking Spaces**
- 21m of vehicular parking spaces. Shown organised on the plan as 7no. spaces in total, including:
    - 5no. Regular parking spaces.
    - 1no. Wheelchair accessible EV space.
    - 1no. Allocated electric vehicle charging space.
  - Two EV charging points to service 2-4 vehicles.
  - Finished in high quality precast concrete permeable (SuDS) paving.



- 13 Potential Future Traffic Calming and Raised Crossing Location**
- The statutory context supports traffic calming and crossing point for the road near the Courthouse.
  - The location would facilitate pedestrian movements from the south side of the main road to the north including the Courthouse and the Rock Road housing developments.

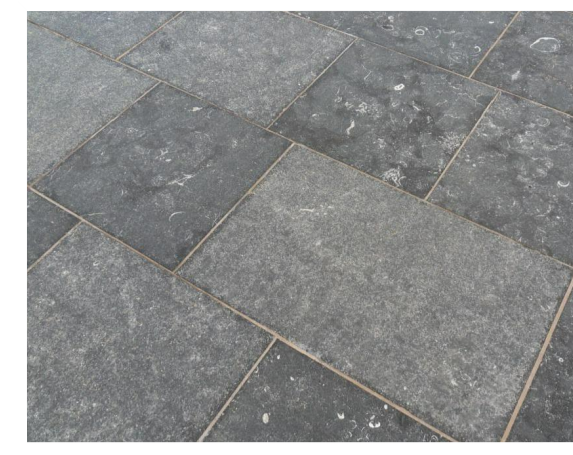


- 7 Shared Surface Access**
- Shared surface access, vehicle parking and turning head are located to the east and north of the Courthouse.
  - Width varies, but a 5m width is maintained to the east of the buildings and a 6m width to the north of the building near the parking bays.
  - A 3m wide defined strip at the centre of the carriageway encourages vehicles to navigate the centre of the space at the east of the site.
  - Surface is to be finished in precast concrete permeable (SuDS) paving.



- 14 Entrance Feature and Focal Point**
- Monolithic entrance feature located at the landing of the western access ramp. Providing a focal point to help identify and announce the North East entrance.
  - Natural stone mass with Cor-ten steel decoration and signage.

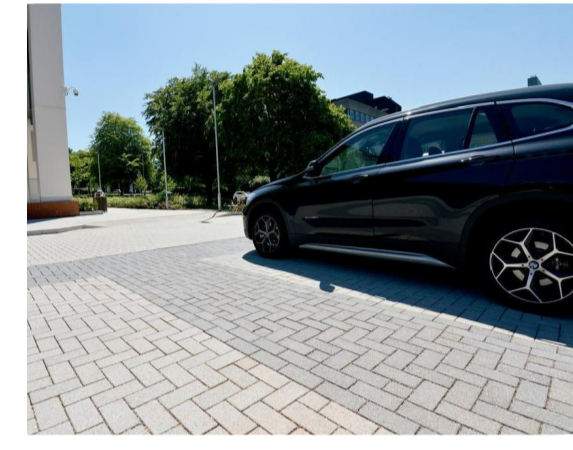
## Surfaces



- Granite Flag Paving**
- Courtyard, Terrace and front of the building.
  - High quality and durable concrete paving in a rigid construction.
  - Varying sizes
  - Mid grey colour mix
  - Bush hammered finish
  - EU origin



- Precast Concrete Block Paving**
- For footpaths.
  - High quality precast concrete block paving in a rigid construction.
  - Grey and mixed grey
  - Bush hammered finish
  - Irish or EU origin



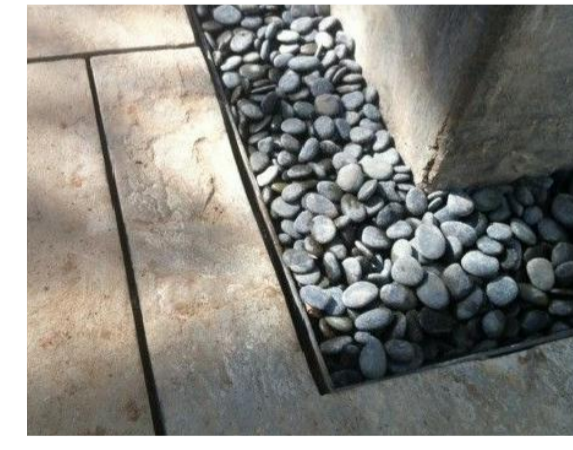
- Precast Concrete Permeable Paving**
- For shared surface access & vehicle parking areas.
  - High quality precast granite aggregate concrete block paving in a flexible permeable construction.
  - Grey and mixed grey.
  - Irish or EU origin



- Self Binding Gravel Surface**
- For secondary footpaths and gardens.
  - Compacted self binding gravel surface
  - Buff-Golden colour
  - Irish origin
  - Ballylusk or similar
  - Corten Steel edge with square profile top, flush and raised as needed.



- Reinforced Grass**
- For access path to telecommunications structure.
  - Low maintenance. Needs occasional mowing.
  - Durable grass seed mix.
  - Irish or EU origin



- River Pebbles**
- As finish layer for building edge drainage channel.
  - Allows free infiltration of surface water into storm water system to protect building.
  - Local or Irish supplier.
  - 50mm-80mm Size



- Granite Steps**
- Monolithic stone steps enclosed with walls or set into the landscape.
  - Rough picked texture
  - Nosing delineated with contrasting granite nosing inserts.
  - 50mm dia. tube Handrails to both sides as standard.

## Furniture



- Concrete post and timber fence**
- New secure boundary and screen for telecommunications structure.
  - Lockable gated entrance
  - Stained dark colour to help with screening.



- Replacement boundary walls**
- New secure boundary treatment for the eastern perimeter.
  - Rubble stone clad wall and piers
  - 1.8m standard height. Will vary with locational constraints.
  - Irish limestone



- New perimeter railings**
- New secure boundary treatment for the northern perimeter.
  - Solid steel bar railings, in dark grey.
  - 2.4m height.
  - Irish supplier



- Feature lighting**
- Low level lighting to illuminate paths and delineate access ways.
  - Durable construction
  - Bollard sized



- Seating and Tables**
- Hardwood timber benches and tables
  - A mixture of types, sizes and arrangements to suit different user needs. From standard bench seats to outdoor meeting tables.



- Informal Sculptural Seating**
- Giant polished concrete pebbles
  - A collection of different shapes to facilitate informal social gathering and interaction.



- Cycle Stands**
- Durable Cor-ten steel cycle stands
  - Root fixed for added security
  - Integrated E-Bike / E-Scooter Charging

## Planting



- Lawn | Grass & Clover with Bulbs**
- Main surface type for western public space.
  - Added clover and spring bulbs for biodiversity, eg. Crocus, Daffodils, Snowdrops
  - Permeable surface



- Planting | Perennial Mix**
- All year round colour and interest.
  - Different mix for sunny and shaded areas.
  - Seed heads for winter interests and for biodiversity enhancement.
  - Plants that can be divided for use elsewhere such as ornamental grasses.
  - Bark mulch surface finish



- Planting | Shrub Beds**
- Border shrub beds for bolstering boundaries, adding density or height and softening / screening of structures.
  - Dense or evergreen planting in tiers. With some young trees where suitable. Spring bulbs.
  - Deep bark mulch surface finish



- Trees | Specimen 01**
- Main tree type for western public space.
  - Tree type to match existing trees around Millennium Fountain. Species to be confirmed.
  - Semi mature trees with raised crown for instant impact.
  - Eg. Lime (TBC)



- Trees | Specimen 02**
- Tree types for Courtyard and Terrace
  - Lightly structured and shade tolerant tree with good architectural quality.
  - Semi mature trees with raised crown and exposed stems for instant impact.
  - Light structure and density to not overshade.
  - Eg. Serviceberry, Juneberry



- Trees | Native Mix**
- Secondary tree types for borders and beds.
  - A mostly native mix of species to bring all year visual interest and boost biodiversity.
  - Heavy standard size.
  - Species: - Dwarf Scots Pine, Silver Birch, Oak, Holly, Hazel, Rowan, Amelanchier.



- Ex.Trees | Crown Lifting**
- It is proposed that the retained existing trees located within the green area near the Millennium Fountain, have their crowns lifted to improve visibility and light in that space.
  - Raised to approx. 2-2.5m above ground level.

A	17-07-23	Part 8	NdeJ
REVISION	DATE	DESCRIPTION	APPROVED

## BORRIS IN OSSORY COURTHOUSE Main Street, Borris in Ossory, Co.Laois

DRAWN : HapR	STATUS: Stage 2 - Planning	DRAWING No. BiO-L-002-Components	PROJECT: Borris in Ossory Courthouse and Amenity Enhancement Scheme
CHECKED : NdeJ	SCALE: 1:200 at A1	DATE: July 2023	TITLE: Main Components
APPROVED : NdeJ	FORMAT: AutoCAD	CLIENT : Laois CoCo	
PROJECT MANAGER : -	This drawing must not be either loaned, copied or otherwise reproduced in whole or in part or used for any purpose without the prior written permission of NdeJA		Nicholas de Jong Associates URBAN DESIGN Howley Hayes Cooney Laois County Council Aras an Chontas, Portlaoise, Co. Laois REV. A