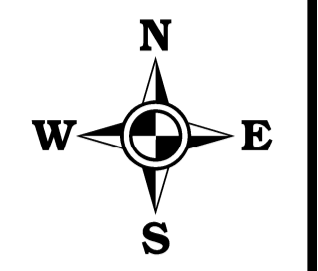
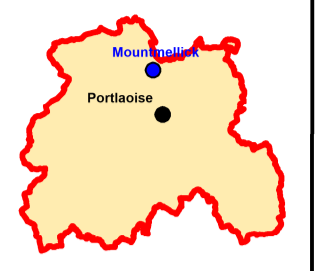
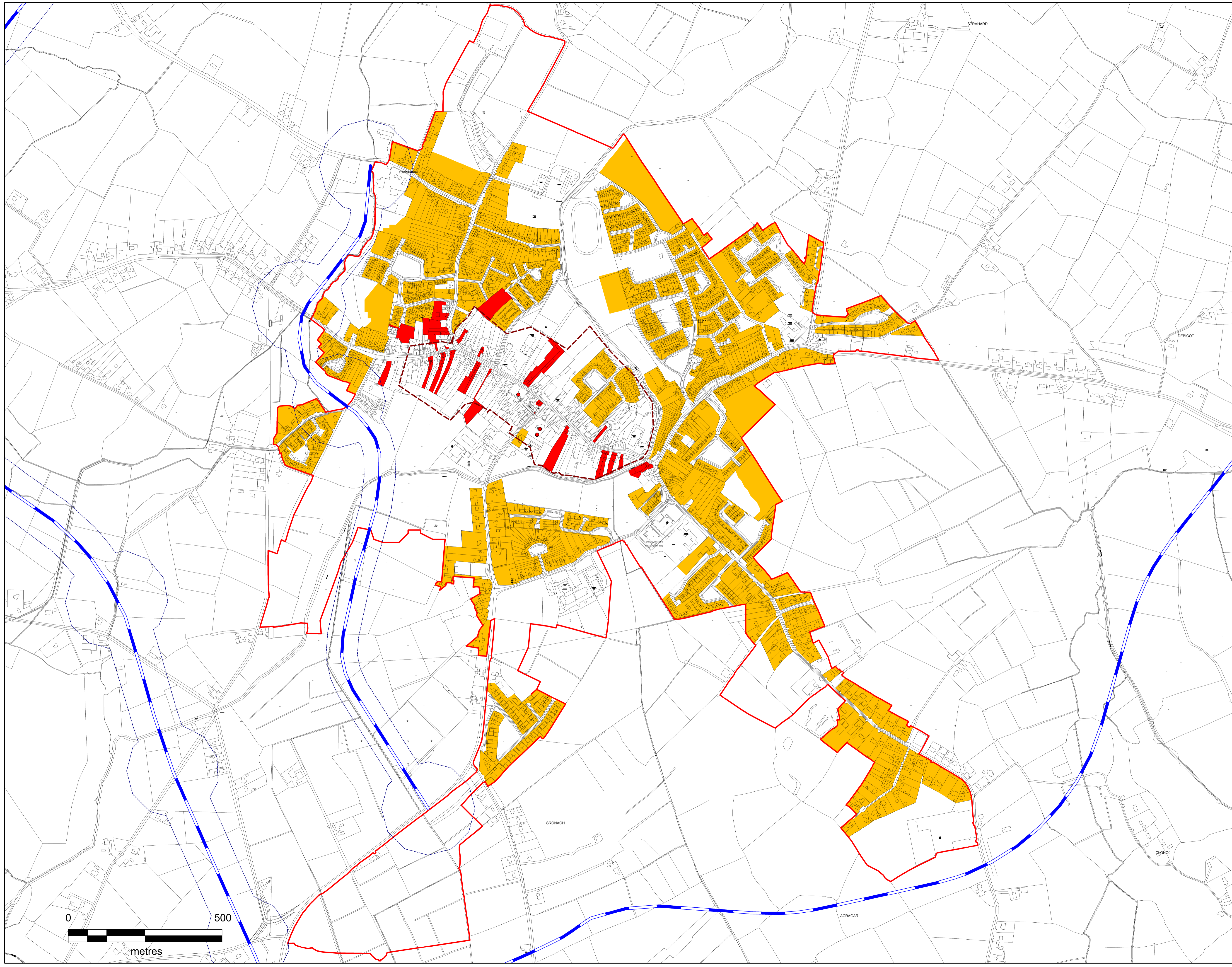


**LAOIS COUNTY COUNCIL  
DRAFT MAP  
RESIDENTIAL ZONED  
LAND TAX**

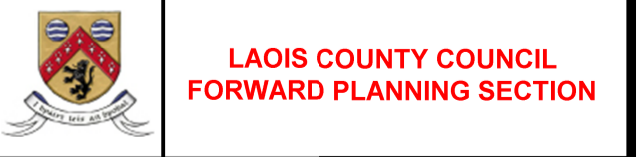


- Legend:**
- = Land Zoned Mixed use  
Total Area = 4.34ha
  - = Land Zoned Residential  
Total Area 95.7ha
  - = Natura 2000 site - Constrained Land Use Zoning Objective
  - = Roads Approved
  - = Roads Objectives
  - = Indicative Roads Objectives
  - = Buffer zone For Sewage Treatment Plant
  - = Zone Of Notification
  - = Sites and Monuments Record
  - = Extent of Development Boundary



Refer to Infrastructure Assessment for Tier 1 and Tier 2 Zoning

**MAP 3.2 -  
MOUNTMELICK**



Drawn: Brian Seale	Checked: David O'Hara	Approved: Angela McEvoy
-----------------------	--------------------------	----------------------------

PRODUCED BY LAOIS COUNTY COUNCIL'S FORWARD PLANNING SECTION UNDER COPYRIGHT AGREEMENT FROM ORDNANCE SURVEY OF IRELAND. ALL RIGHTS RESERVED. LICENCE NO. CYAL0203150