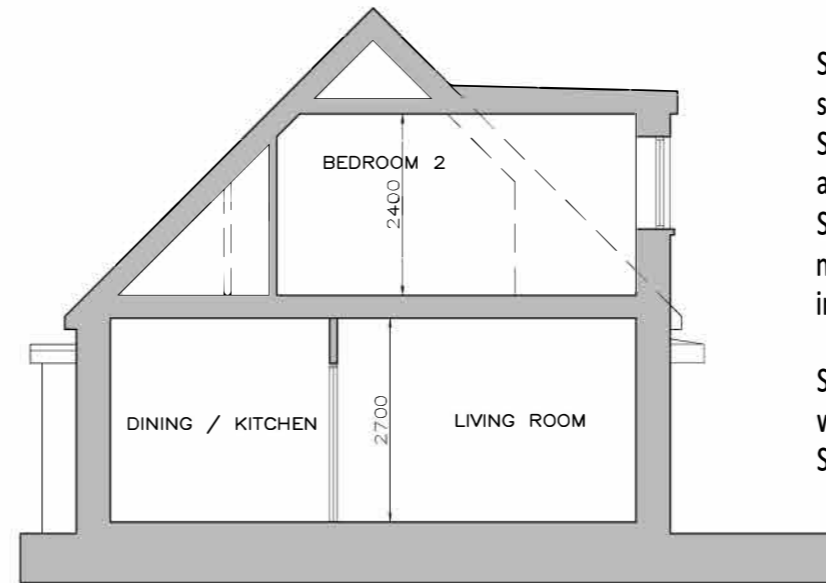


ROOF PLAN

All window and door sizes and design are subject to modification to allow compliance with Part B, M + L as part of detailed design.

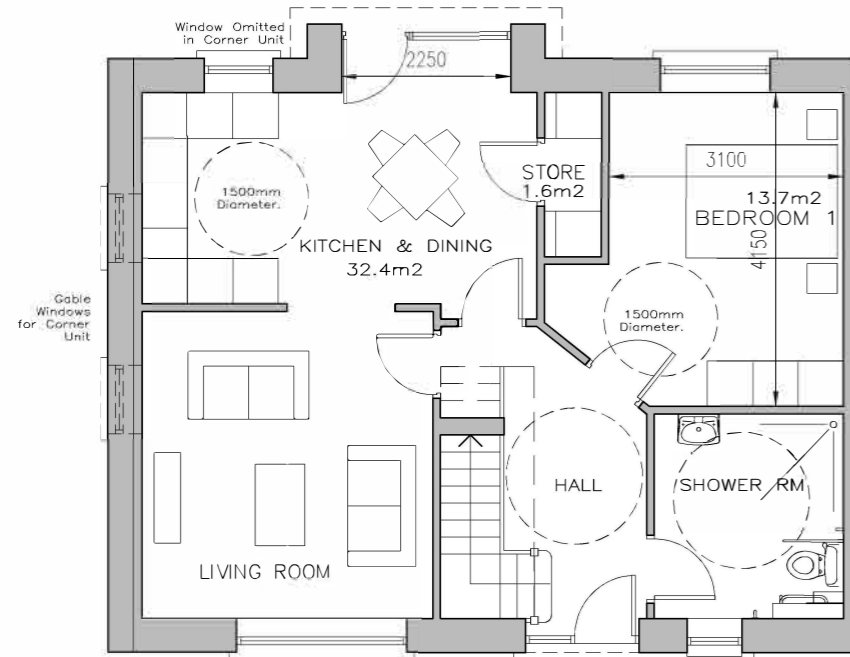
Solar panels are located and sized indicatively, and the optimum position will be defined at detailed design stage, which may be in a different location to that indicated.

External heat pumps to be included not indicated on drawings and maybe omitted or re-located at detailed design stage.



Selected dark grey / black roof tiles / slates
 Selected Aluminium, timber or pvc fascia and soffits
 Selected Grey GRP / metal/ roofing membrane to flat/ low pitch roof
 indicative location of solar panels

Selected Aluminium, timber or upvc windows
 Selected render finish

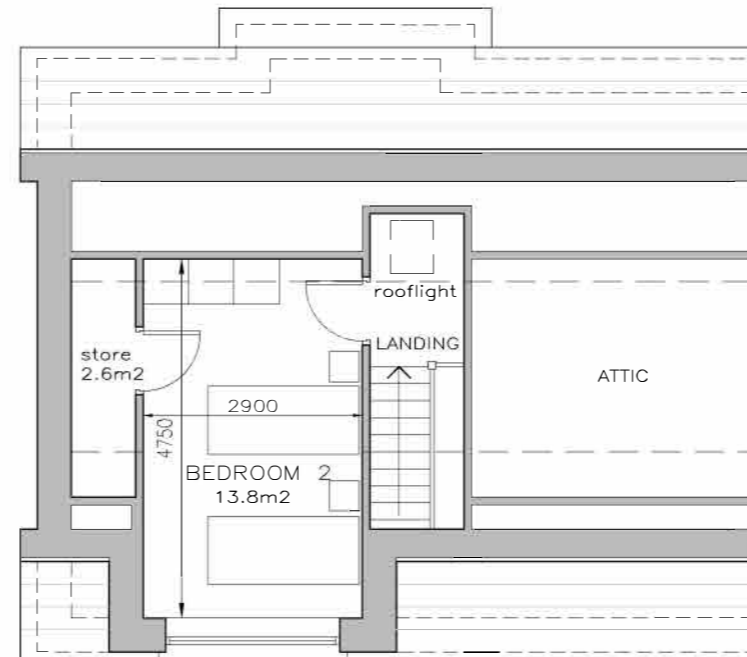


GROUND FLOOR PLAN

Eave, parapet and ridge dimensions are subject to minor modification at detailed design.

Materials, brick type and colour are subject to modification in accordance with availability of material and cost plan considerations.

All boundary treatments, hard landscape surfaces and street furniture are subject to modification to materials, type and height in accordance with availability of material and cost plan considerations.



FIRST FLOOR PLAN



KEY PLAN (NTS)
 TYPE C HIGHLIGHTED IN BLUE

GROUND FLOOR PLAN

HOUSE TYPE B4 : 2 Bed ACCESSIBLE SEMI-DETACHED / TERRACED HOUSE

Gross Floor Area 88m² (946 sqft) Storage : 4.2 m²

NOTE: FLOOR AREA AND CEILING HEIGHT OF DWELLINGS ARE SUBJECT TO MODIFICATION AT DESIGN DETAIL STAGE

NOTES:

HOUSE TYPE C DRAWING

NOT FOR CONSTRUCTION.
 ARCHITECT'S DRAWINGS TO BE READ IN CONJUNCTION WITH ALL OTHER RELEVANT INFORMATION.

WRITTEN DIMENSIONS TO BE TAKEN IN PREFERENCE TO SCALED DIMENSIONS. ALL DIMENSIONS TO BE CHECKED ON SITE AND ANY DISCREPANCIES TO BE BROUGHT TO THE ARCHITECTS IMMEDIATE ATTENTION. THIS DRAWING IS COPYRIGHT AND IS THE PROPERTY OF SHERIDAN WOODS ARCHITECTS

All window and door sizes and design are subject to modification to allow compliance with Part B, M + L as part of detailed design.
 Solar panels are located and sized indicatively, and the optimum position will be defined at detailed design stage, which may be in a different location to that indicated.
 Heat pumps maybe located externally or internally subject to detailed design.
 Building heights, boundary wall, eave, parapet and ridge dimensions are subject to minor modification due to ground levels at detailed design.
 Materials, brick type and colour are subject to modification in accordance with availability of material and cost plan considerations.
 All boundary treatments, hard landscape surfaces and street furniture are subject to modification to materials, type and height in accordance with availability of material and cost plan considerations.

DATE	REV.	STAGE	NOTES:
APRIL 22			

SHERIDAN WOODS ARCHITECTS + URBAN PLANNERS					
14 BAGGOT ST , DUBLIN 2 TEL: 01 6764025 EMAIL: info@sheridanwoods.ie WEB: www.sheridanwoods.ie					
CLIENT:	LAO'S COUNTY COUNCIL				
PROJECT:	RESIDENTIAL DEVELOPMENT CLONROOSKE, CO. LAOIS				
TITLE:	HOUSE TYPE C PLANS & SECTION 2 BED ACCESSIBLE DORMER TWO STOREY SEMI-DETACHED DWELLING				
JOB NO.:	DRAWING No.:	REV.:	DRAWN BY:	DATE:	SHEET:
19010	PA-008	A	SW	JUL 22	A3
					1:100 /as shown