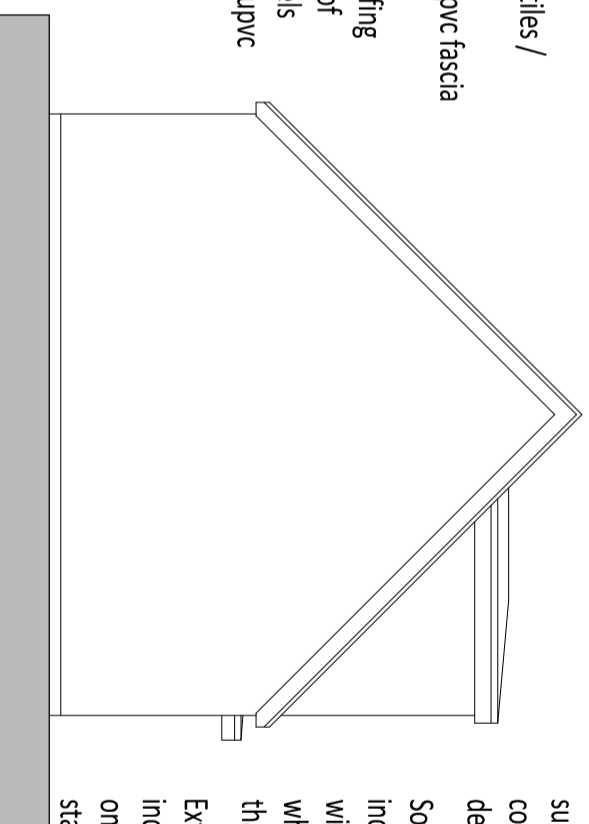


FRONT ELEVATION

- Selected dark grey / black roof tiles / slates
- Selected Aluminium, timber or pvc fascia and soffits
- Selected Grey GRP / metal/ roofing membrane to flat/ low pitch roof
- indicative location of solar panels
- Selected Aluminium, timber or upvc windows
- Selected render finish
- Selected brick finish



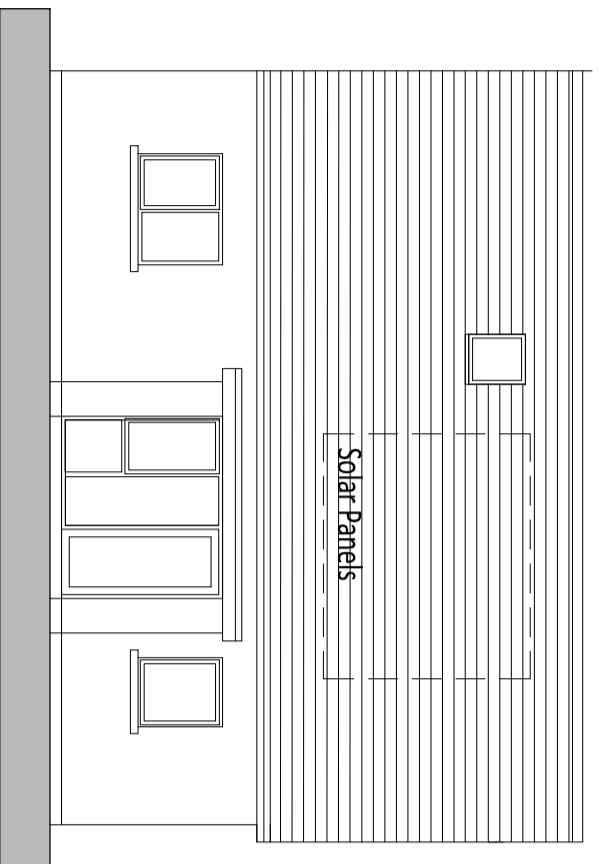
GABLE ELEVATION

All window and door sizes and design are subject to modification to allow compliance with Part B, M + L as part of detailed design.

Solar panels are located and sized indicatively, and the optimum position will be defined at detailed design stage, which may be in a different location to that indicated.

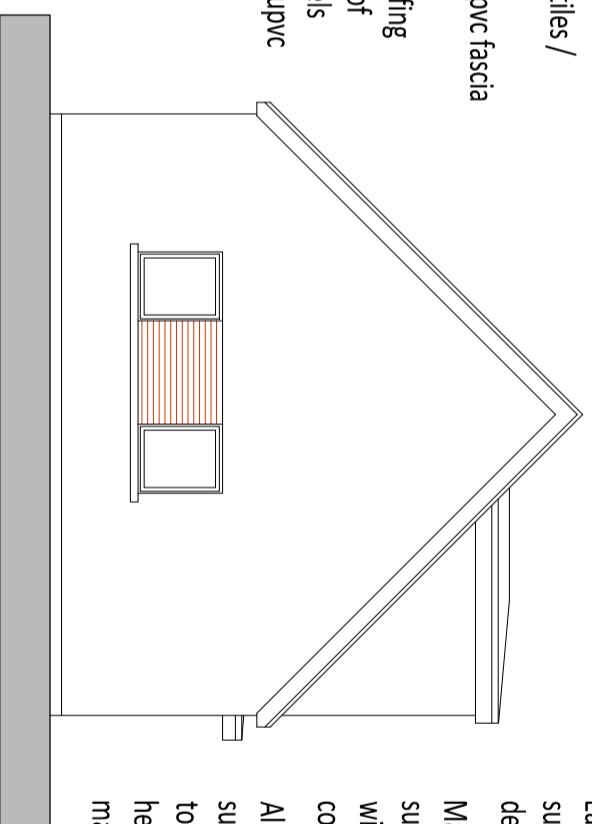
External heat pumps to be included not indicated on drawings and maybe omitted or re-located at detailed design stage.

NOTE: FLOOR AREA AND CEILING HEIGHT OF DWELLINGS ARE SUBJECT TO MODIFICATION AT DESIGN DETAIL STAGE



REAR ELEVATION

- Selected dark grey / black roof tiles / slates
- Selected Aluminium, timber or pvc fascia and soffits
- Selected Grey GRP / metal/ roofing membrane to flat/ low pitch roof
- indicative location of solar panels
- Selected Aluminium, timber or upvc windows
- Selected render finish
- Selected brick finish



GABLE ELEVATION (in corner house situation)

Eave, parapet and ridge dimensions are subject to minor modification at detailed design.

Materials, brick type and colour are subject to modification in accordance with availability of material and cost plan considerations.

All boundary treatments, hard landscape surfaces and street furniture are subject to modification to materials, type and height in accordance with availability of material and cost plan considerations.

NOTES:

DRAFT HOUSE TYPE C DRAWING

NOT FOR CONSTRUCTION.
ARCHITECTS DRAWINGS TO BE READ IN CONJUNCTION WITH ALL OTHER RELEVANT INFORMATION

WRITTEN DIMENSIONS TO BE TAKEN IN PREFERENCE TO SCALED DIMENSIONS. ALL DIMENSIONS TO BE CHECKED ON SITE AND ANY DISCREPANCIES TO BE BROUGHT TO THE ARCHITECTS IMMEDIATE ATTENTION. THIS DRAWING IS COPYRIGHT AND IS THE PROPERTY OF SHERIDAN WOODS ARCHITECTS

All window and door sizes and design are subject to modification to allow compliance with Part B, M + L as part of detailed design.

Solar panels are located and sized indicatively, and the optimum position will be defined at detailed design stage, which may be in a different location to that indicated.

Heat pumps maybe located externally or internally subject to detailed design.

Building heights, boundary wall, eave, parapet and ridge dimensions are subject to minor modification due to ground levels at detailed design.

Materials, brick type and colour are subject to modification in accordance with availability of material and cost plan considerations.

All boundary treatments, hard landscape surfaces and street furniture are subject to modification to materials, type and height in accordance with availability of material and cost plan considerations.

DATE	REV.	STAGE	NOTES

SHERIDAN WOODS ARCHITECTS + URBAN PLANNERS
 14 BAGGOT ST., DUBLIN 2 TEL: 01 6764025 EMAIL: info@sheridanwoods.ie WEB: www.sheridanwoods.ie

CLIENT: LAOIS COUNTY COUNCIL
 PROJECT: RESIDENTIAL DEVELOPMENT CLONROOSKE, CO. LAOIS

TITLE: **HOUSE TYPE B4 ELEVATIONS**
 2 BED ACCESSIBLE DORMER TWO STOREY SEMI-DETACHED DWELLING

JOB NO.:	DRAWING No.:	REV.:	DRAWN BY:	DATE:	SHEET:
9010	PA-009	SW	SW	JUL 22	1 : 100 / as shown