

## 02320BG Rev B



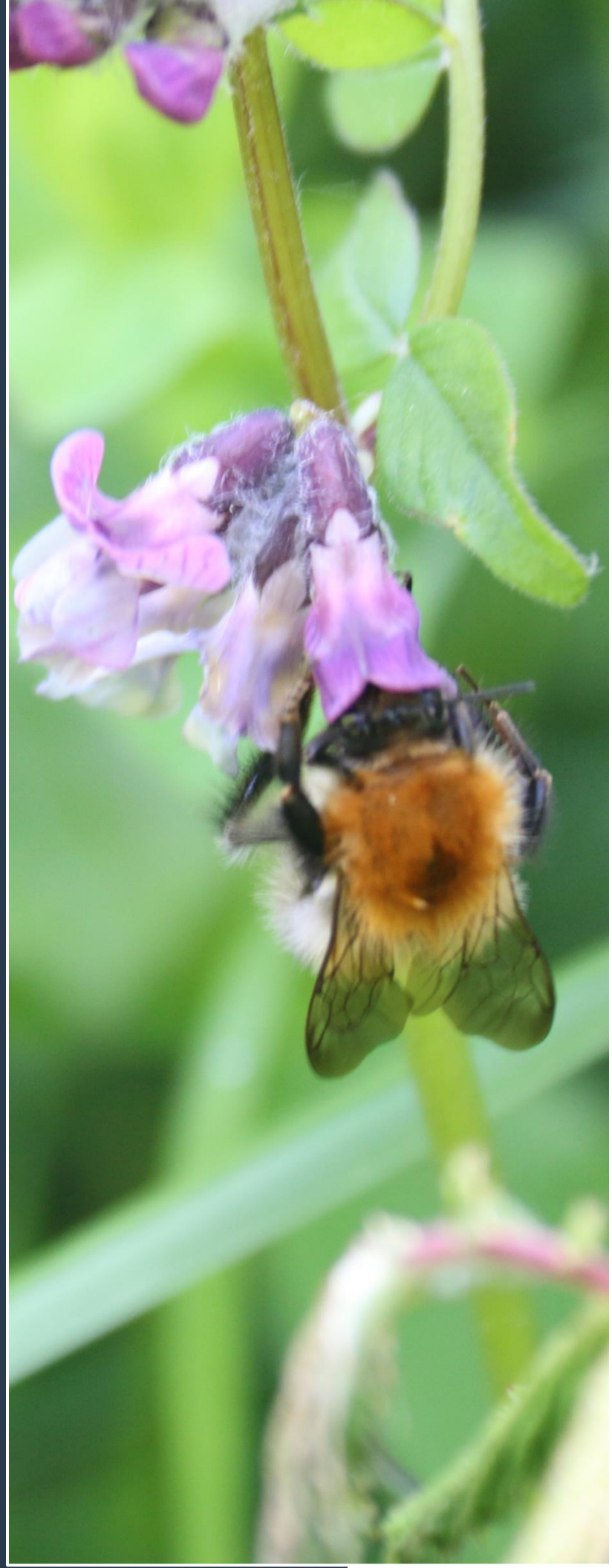
# Introduction

This report sets out the landscape plans for the new residential development and car park at Railway Street, Portlaoise. The design focuses on the use of high-quality green infrastructure features to maximise the environmental and social benefits for the residents and other users.

It includes features that will help capture rain water to minimize the water sent to storm water drains, enhance the site for biodiversity, create opportunities for natural play, and be visually attractive.

This design also taps into the rich local heritage of our railway and in particular highlight the important role that Laois man, William Dargan, has played on the national level.

The accompanying landscape drawings contain further detail and scaled plans.





# Main Features

## ***Green Infrastructure features to deliver:***

- *Rain water capture*
- *Biodiversity enhancement*
- *Carbon capture*
- *Natural play*
- *Visual enhancement*

***New monument to William Dargan,  
the father of Irish Railway set in the  
proposed plaza***

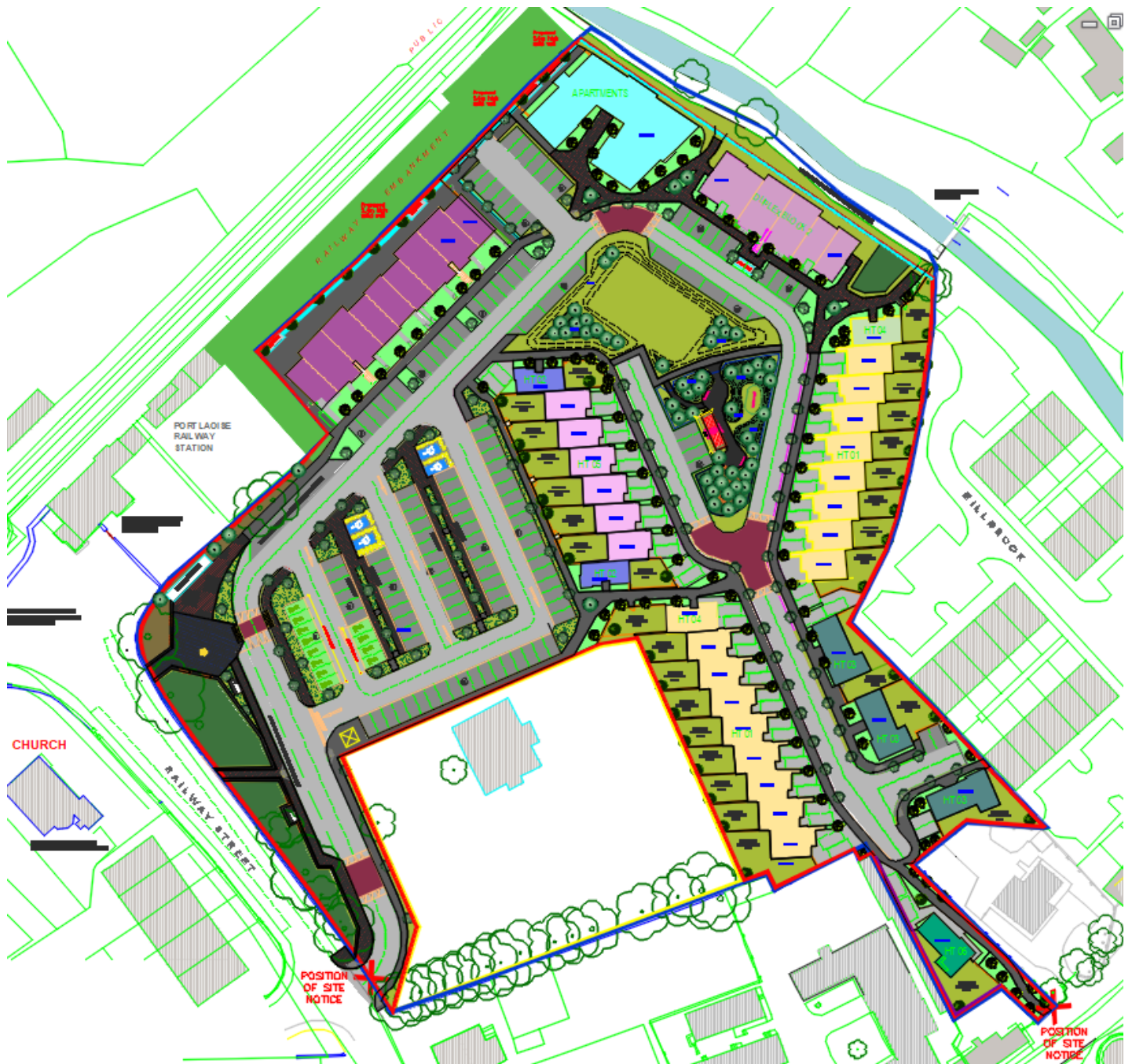
## ***Main biodiversity proposals include:***

- *900m<sup>2</sup> wildflower meadow / strips*
- *171m<sup>2</sup> new native shrub planting*
  - *200m hedging*
  - *50m new native green wall*
- *989m<sup>2</sup> pollinator friendly planting beds*
- *15 new nesting cavities sites for Swifts*
  - *280 new trees*



# Landscape Masterplan

See accompanying landscape drawings for scaled and detailed plans





# Landscape Plan - Park

The design of the park space aims to maximise the play and recreational value as well as biodiversity and visual aesthetics. It focuses on the use of natural features such as tree and wildflower planting and earth mounding to maximise these values. Natural play parks have been demonstrated to work and be successful as in Páirc an Phobail in Portlaoise.

The proposals include:

- Earth mounding to form the different spaces with native woodland wildflower meadow and trees planted in strategic locations. The meadow areas are proposed under the copses of trees to maximise biodiversity value of these areas. This will also avoid any potential future damage to the trees from maintenance operations of the amenity grass areas.
- A flat amenity grass space for ball games
- A new path is created along the route of a natural desire line that will connect both sides of the development
- A natural play park space with:
  - Perimeter 1.2m high bow top railing with a self-closing gate at the entrance
  - Seating area with benches
  - Play equipment: birds nest swing, play tunnel built into mounding and balance beam
  - Natural play opportunities with the earth mounding, adventure woodland trail (see image below), and meadow



**Proposed Play Equipment:** Birds nest swing, play tunnel & balance beam





# Landscape Plan - Park

See accompanying landscape drawings for scaled and detailed plans





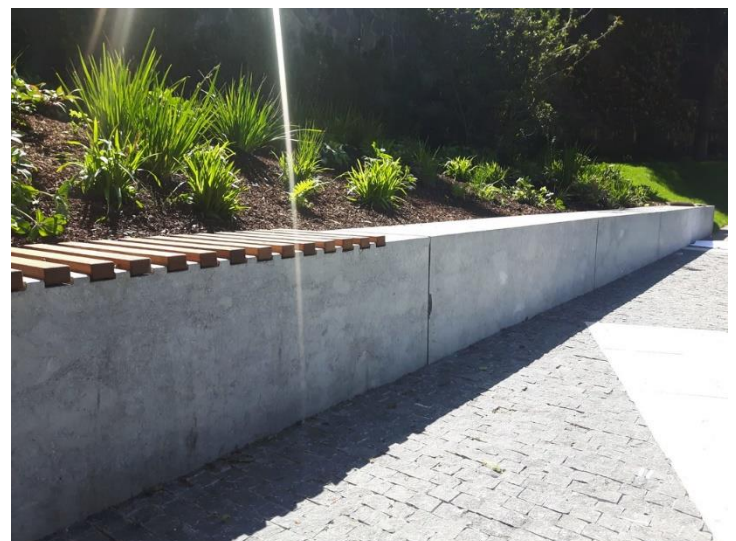
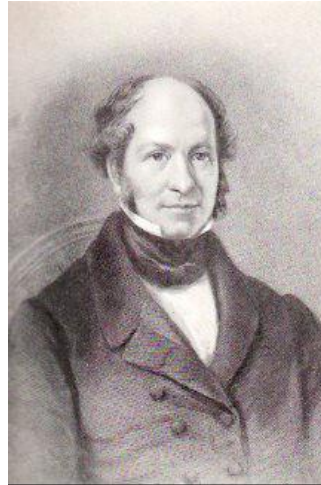
# Landscape Plan - Plaza

Proposals include the creation of a new feature paved space linking the railway station and the new car park. The paving proposed is Irish Blue Limestone in keeping with the stone work on the station building. A new monument of William Dargan (see image below) will be erected as the central focal point of the plaza. Mr Dargan was born in Laois and was one of Ireland's most important railway engineers.

The path from the plaza will connect into the existing street path that leads to the station. A low retaining wall will offset the height difference and act as seating for users. The plaza will also include a bicycle parking area and connect via a pedestrian crossing to the car park.

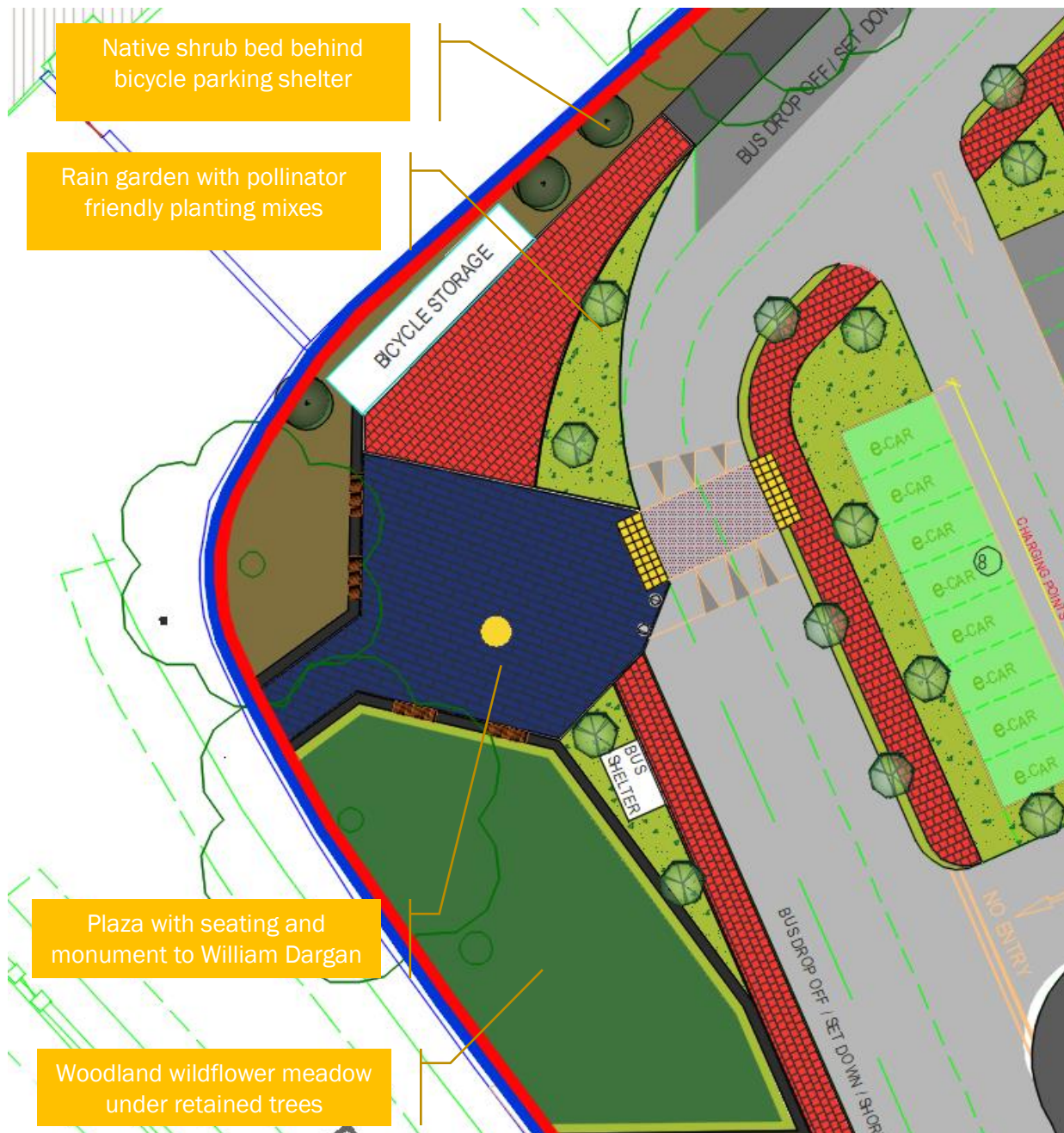
The soft landscaping will help tie the hard landscaping into the urban landscape and will include:

- Native woodland wildflower meadow under the existing retained trees
- Native shrub planting
- Pollinator friendly ornamental rain gardens that will take the rain water from the paved areas



# Landscape Plan - Plaza

See accompanying landscape drawings for scaled and detailed plans





# Landscape Plan – Railway Station Car Park

See accompanying landscape drawings for scaled plans.

Landscape proposals include the use of urban bioswales in the verges to: 1) minimise the volume of rain water entering the storm water drainage system; and 2) improve the quality of the water leaving the site by allowing the water coming off the car park to infiltrate into the ground at source. Any overflow will be sent into the storm water drainage system. The bioswales will be planted with biodiversity friendly and water tolerant perennials and trees.





See accompanying landscape drawings for scaled plans.





# Streetscape & Buildings

The landscaping proposals for the streetscape and around the buildings will include:

- Avenues of street trees along the internal roads and the car park
- Pollinator friendly planting beds will be planted around the buildings
- Swift bricks will be incorporated into the taller apartment buildings
- Wildflower meadow and hedging will be created along the River Triogue walk

## Gardens

To further enhance the sites green infrastructure, trees and pollinator friendly planting beds will be planted at each house. This will include one native Rowan for each back garden. In the small pockets in the front gardens, a small ornamental tree and pollinator friendly planting beds will be planted. As well as the biodiversity value, these will add colour and visual interest throughout the year.



## Other Biodiversity Measures

As part of the planting mixes the larval food plant for both the Brimstone and Marsh Fritillary butterfly are included. These are the two native buckthorn shrub species, which will be included in the shrub mix and Devil's-bit Scabious which will be included in the pollinator friendly planting and the wildflower meadows.



## Landscape Plans Delivered By:



Green Pine Consultants

Bridge Street Centre, Portlaoise, Co. Laois. (M) +353 (0)87 7829477  
Fairhead Road, Ballycastle, Co. Antrim. BT54 6RD (M): +44 (0)77 25741920

[greenpineconsultants@gmail.com](mailto:greenpineconsultants@gmail.com)

[www.greenpineconsultants.com](http://www.greenpineconsultants.com)