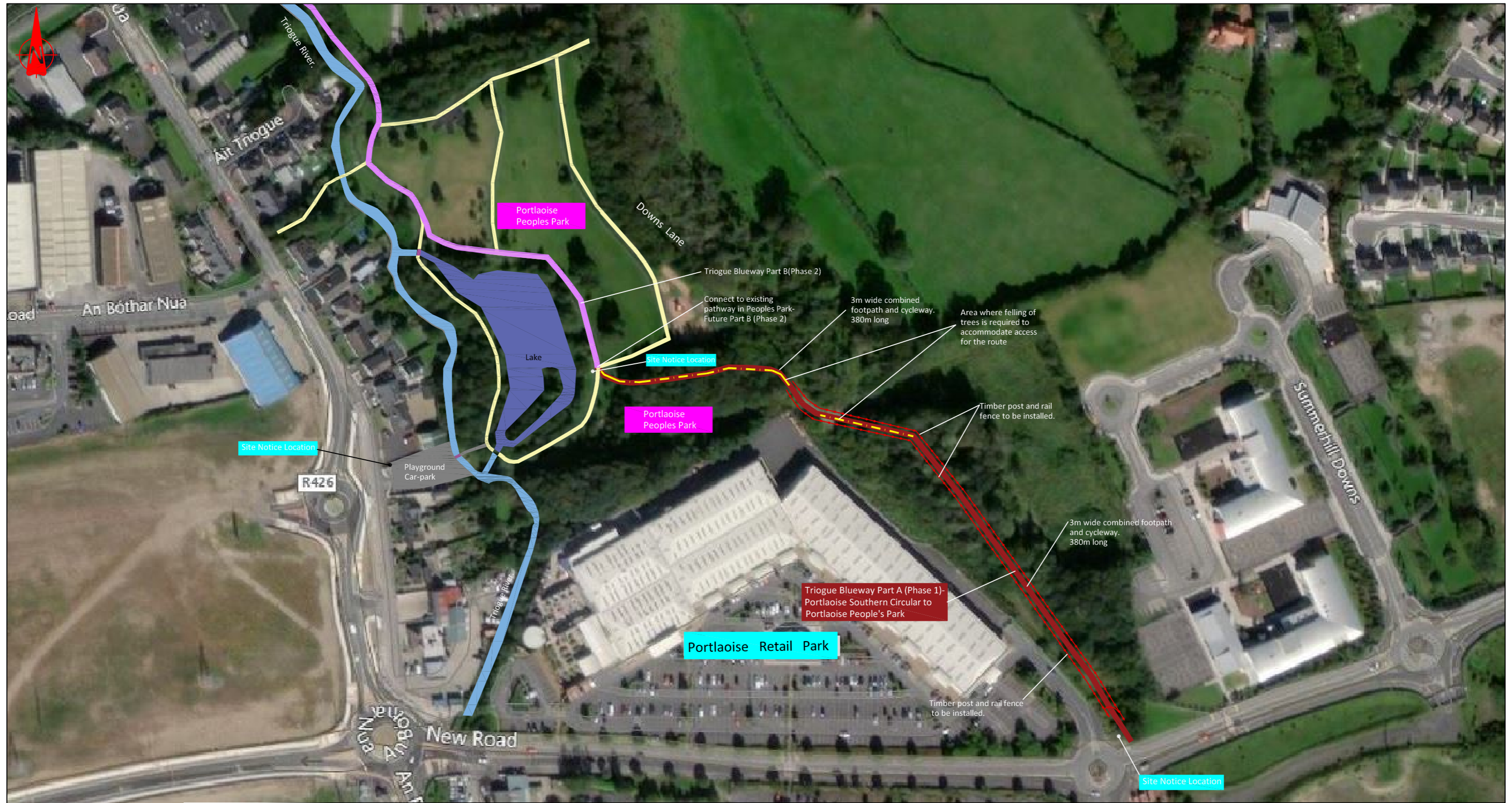
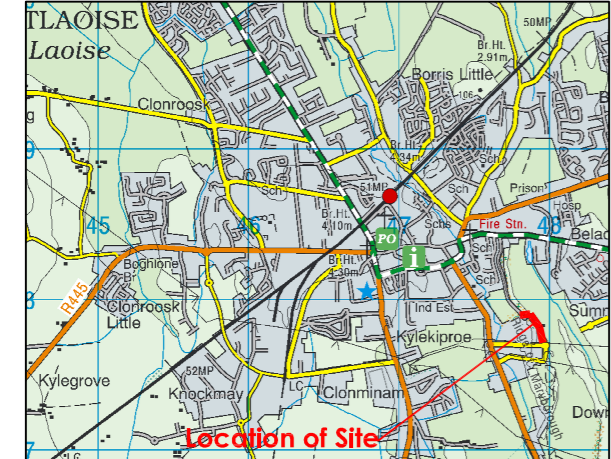


**Proposed Layout Plan**



**Location Map. Not to Scale.**



**LEGEND**

Triogue Blueway Part A (Phase 1)	<span style="color: red;">—</span>
Future Triogue Blueway Part B (Phase 2)	<span style="color: magenta;">—</span>
Existing Park Footpaths	<span style="color: yellow;">—</span>
Triogue River	<span style="color: blue;">—</span>
Car-Park	<span style="color: grey;">—</span>

Revision	Date	Description

<b>Project:</b> Triogue Blueway Part A (Phase 1)				
<b>Title:</b> Proposed Layout Map 2-Part VIII				
Drawn:	N.S.	File: G: Capital Projects\URDF (R1) Blueway Cycleway	Drawing No.	Rev.
Checked:	D.C.	Scale: NTS	Status: Part VIII	Cycleway-101-1004 0
Approved:	P.McL.	Date: 28/01/2021		

**LAOIS COUNTY COUNCIL  
COMHAIRLE CHONTAE LAOISE**

Mr. Paul McLoughlin,  
Senior Engineer,  
Capital Projects Office

Mr. Simon Walton,  
Director of Services,  
Roads, Transportation, Water Services,  
Environment and Emergency Services.

Laois Capital Projects Office,  
Laois County Council Offices,  
IDA Business & Technology Park,  
Mountain Rd., Portlaoise Co. Laois.  
Tel: (057) 8664157

Laois County Council,  
Aras an Chontae,  
Portlaoise,  
Co. Laois.  
Tel: (057) 8664000

Produced by Laois County Council under copyright agreement from Ordnance Survey of Ireland. All rights reserved. Licence No. LaoisCCMA9802