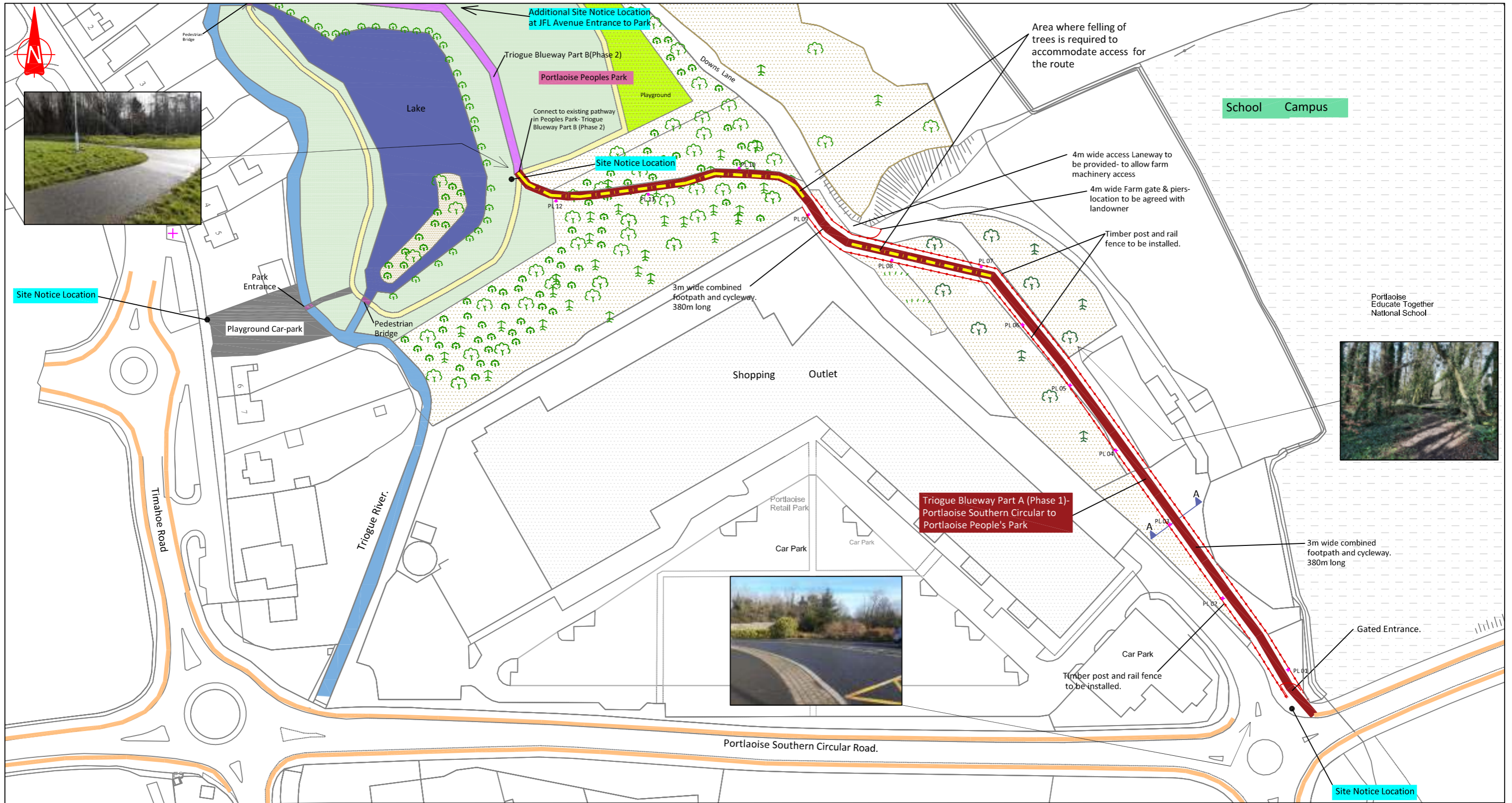
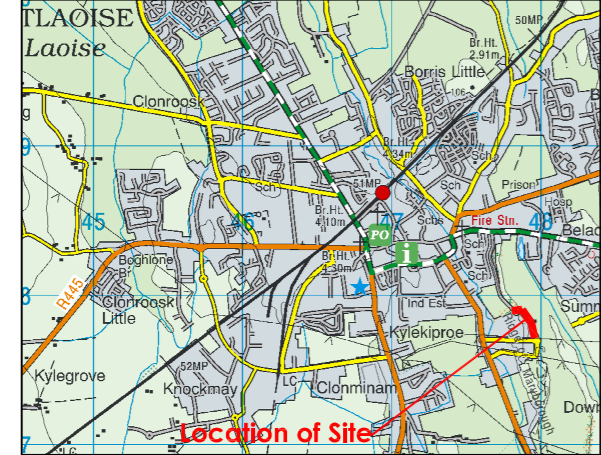


Proposed Layout Plan



Location Map. Not to Scale.



LEGEND

Triogue Blueway- Part A (Phase 1)	
Future Triogue Blueway- Part B (Phase 2)	
Existing Cycleway/ Footpath	
Grassed area	
Woodland Area	
Playground	
School site.	
Triogue River	
Car-Park	
4m high Public light	

Revision	Date	Description

Produced by Laois County Council under copyright agreement from Ordnance Survey of Ireland. All rights reserved. Licence No. LaoisCCMA9802

Project: Triogue Blueway Part A (Phase 1)

Title: Proposed Layout Map 1-Part VIII

Drawn: N.S.	File: G: Capital Projects URDF (B1) Blueway Cycleway	Drawing No.	Rev.
Checked: D.C.	Scale: NTS	Status: Part VIII	Cycleway-101-1001 0
Approved: P.MeL.	Date: 28/01/2021		

**LAOIS COUNTY COUNCIL
COMHAIRLE CHONTAE LAOISE**

Mr. Paul McLoughlin,
Senior Engineer,
Capital Projects Office

Mr. Simon Walton,
Director of Services,
Roads, Transportation, Water Services,
Environment and Emergency Services.

Laois Capital Projects Office,
Laois County Council Offices,
IDA Business & Technology Park,
Mountrath Rd., Portlaoise Co. Laois,
Tel: (057) 8664157

Laois County Council,
Araon Chontae,
Portlaoise,
Co. Laois,
Tel: (057) 8664000