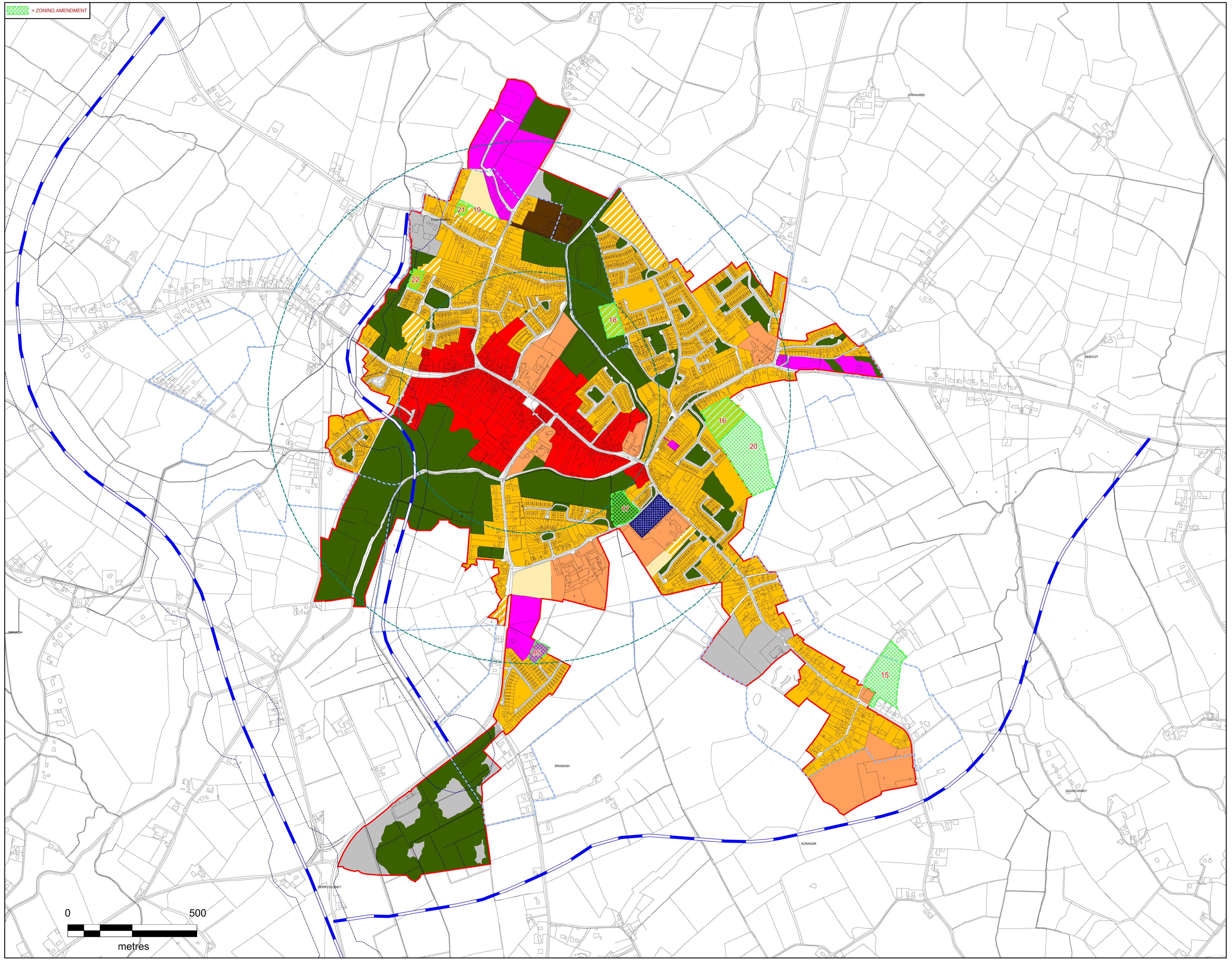
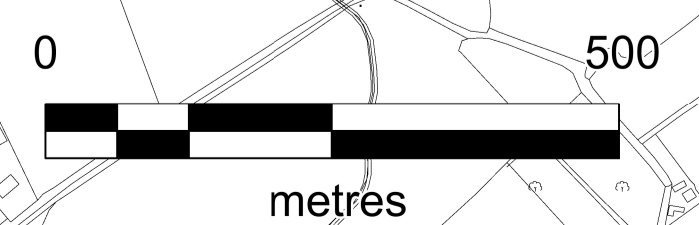


Legend:

- = Town Centre (Primary / Core Retail Area)
- = Residential 1 - Existing Residential
- = Residential 2 - New Proposed Residential
- = Strategic Reserve 2027-2031
- = Community, Educational & Institutional
- = Open Space & Amenity
- = Industrial & Warehousing
- = General Business
- = Neighbourhood Centre
- = Enterprise & Employment
- = Transport & Utilities
- = Mixed Use
- = Roads Objectives Buffer Zone
- = Roads Objectives
- = Roads Being Approved
- = Development Boundary
- = CSO Settlement Boundary
- = 500m/1km Radius



= ZONING AMENDMENT



Refer to Infrastructure Assessment for Tier 1 and Tier 2 Zoning

**MAP 3.2 -
MOUNTMELICK**

**LAOIS COUNTY COUNCIL
FORWARD PLANNING SECTION**

Drawn: Bryan Scully	Checked: David O'Hara & Cecilia Scanlon	Approved: Angela McEvoy
------------------------	---	----------------------------

PRODUCED BY LAOIS COUNTY COUNCIL'S FORWARD PLANNING SECTION UNDER COPYRIGHT AGREEMENT FROM ORDNANCE SURVEY OF IRELAND. ALL RIGHTS RESERVED. LICENCE NO. 2021/0900MOUNTMELICKCOUNTYCOUNCIL